

XANTHE  
BURDETT  
VEGETABLE  
VENUS

OPENING 13.5.26 6.30 - 8.30PM

Wilder Gallery is proud to present *Vegetable Venus*, a solo exhibition of new paintings by Xanthe Burdett. Following the success of the artist's solo presentation at Echo Art Fair in 2025, this exhibition marks her first solo presentation at the gallery. In this new body of work, Burdett explores the radical permeability of the human form, the body as a site of constant ecological and mythic flux.

*Vegetable Venus* draws on the dual Aphrodites described in Plato's Symposium: Venus Coelestis and Venus Naturalis. One is crystalline, smooth and geometric; the other is organic, fecund and transforming. Burdett's paintings live in the tension between them, the interstitial, where the figure is neither fixed nor self-contained, but mutable, porous, and inseparable from the natural world. Situated within an artistic lineage of bodies ranging from prehistoric sculptures and medieval mandrakes to the languid reclining nudes of the Venetian Renaissance, these works reconfigure inherited ideals of human separateness and supremacy over the non-human world.

In these paintings the body is a site of transformation, entangled with vegetal life. Flesh gives way to nettles, brambles, and tender green shoots; the figure becomes at once host and terrain for organic infiltration. In the titular work, *Vegetable Venus* (2026), the traditional reclining nude is stripped of its marble-like stillness and rendered in a monochromatic verdancy. Conversely, in *Like bees, I feel them brush softly against me* (2026), Burdett employs a paler, ethereal palette. Here, the skeletal structure of the figure appears as a network of winter branches, crowned with a burst of yellow Forsythia. Throughout the exhibition, boundaries between the human and the botanical dissolve, and the body is reimagined as a permeable field shaped by the processes of growth and decay.

The scale of the work shifts between registers: large canvases in which the body expands to fill the pictorial field, and smaller works that carry the compressed intensity of devotional objects. A series of six miniature works on board, utilizing oil and metal leaf, depicts a shifting sequence of foliage, masked figures, and waves of grass. The reference to the icon is instructive; these are not portraits of individuals but of states: emergence, dissolution, and becoming.

Towards the back of the gallery, a miniature painting of a solitary figure invites you to weave through a silk forest of faint, translucent trees. These veils act as thresholds, drawing the viewer into an immersive environment where the boundary between self and landscape begins to thin. A final solitary figure is cocooned among them. Suspended within these hazy landscapes and existing outside of linear time, these figures carry a mythic atmosphere. They draw on a personal symbolic language that suggests archaeology from a half-remembered cosmology, inviting a profound reconsideration of our own ecological intimacy.

*Vegetable Venus 2026*  
oil on linen  
80 x 160 cm | 31.5 x 63 in









WILDER GALLERY



XANTHE BURDETT | VEGETABLE VENUS 13.5.26 - 20-6.26



*They came upon a clearing* 2026  
oil on linen  
70 x 100 cm | 27.56 x 39.37 in

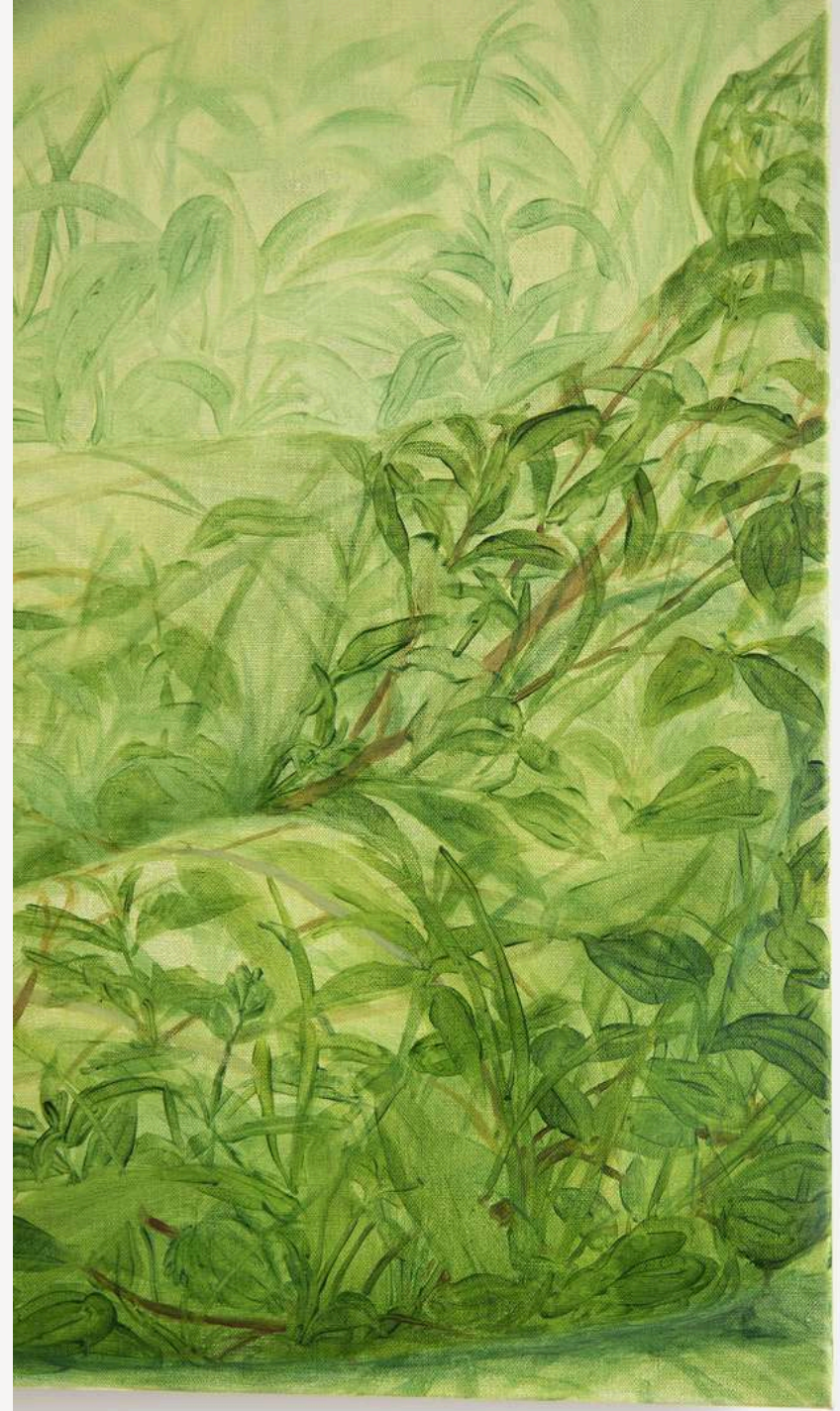


WILDER GALLERY



XANTHE BURDETT | VEGETABLE VENUS 13.5.26 - 20-6.26

WILDER GALLERY

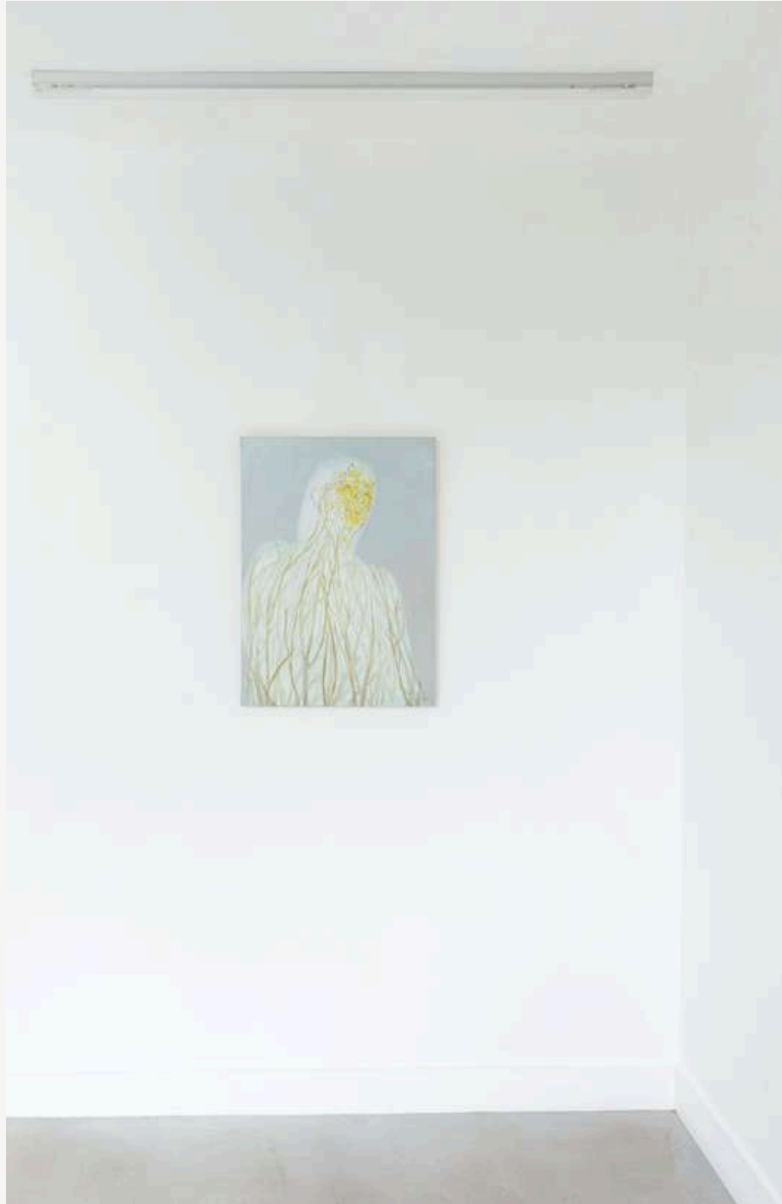


XANTHE BURDETT | VEGETABLE VENUS 13.5.26 - 20-6.26



*Like bees, I feel them brush softly against me, 2026*  
oil on linen  
70 x 50 cm | 27.56 x 19.69 in





WILDER GALLERY



XANTHE BURDETT | VEGETABLE VENUS 13.5.26 - 20-6.26



*Voyeur 2026*  
oil and metal leaf on board  
17.8 x 12.7 cm | 7 x 5 in







*I have waited so long for you to look, 2026*  
oil and metal leaf on board  
17.8 x 12.7 cm | 7 x 5 in





*Yield*, 2026  
oil and metal leaf on board  
17.8 x 12.7 cm | 7 x 5 in







*Fruiting, 2026*  
oil and metal leaf on board  
17.8 x 12.7 cm | 7 x 5 in



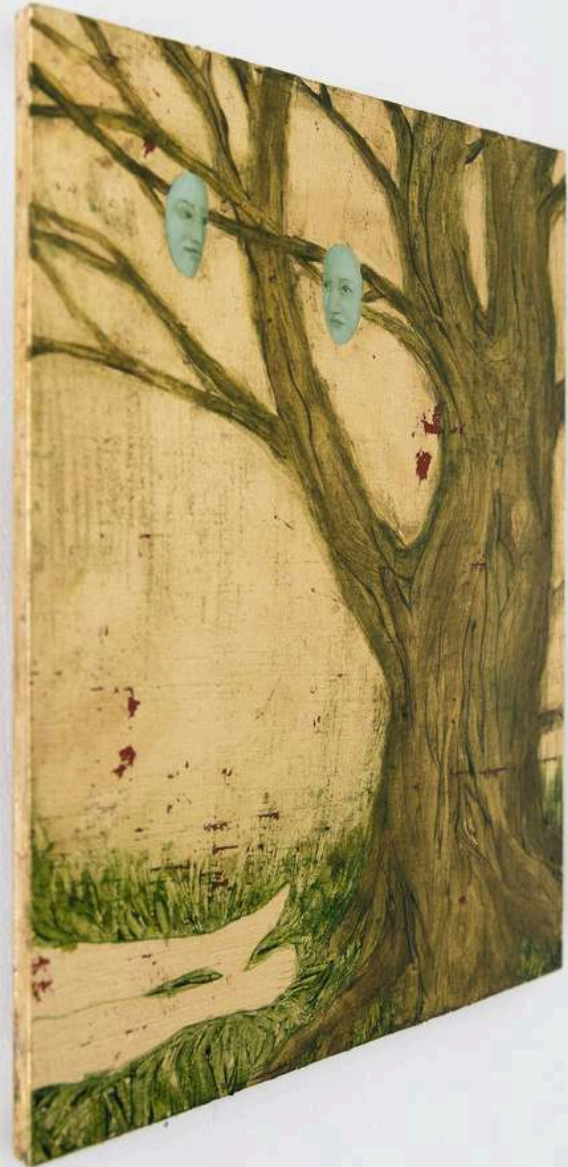
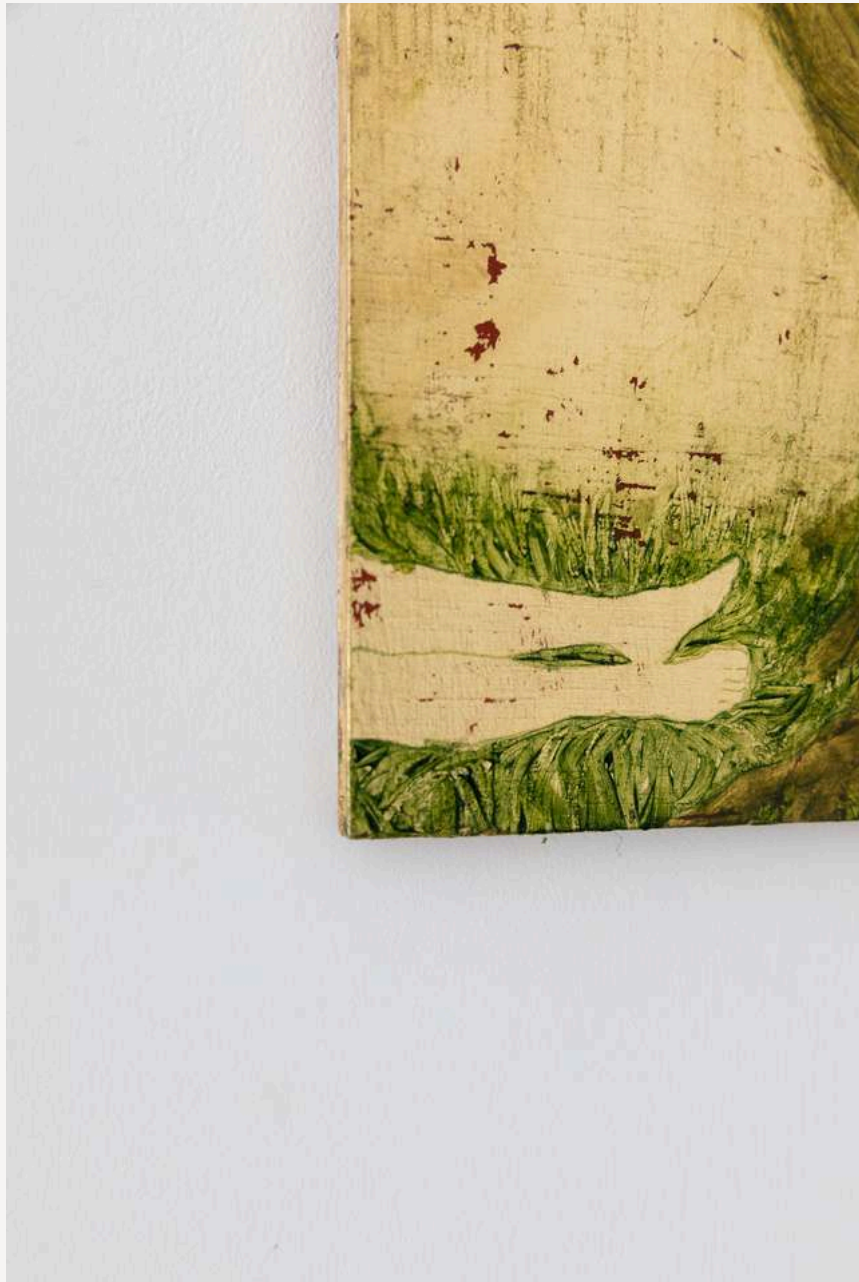




*Carrion*, 2026  
oil and metal leaf on board  
17.8 x 12.7 cm | 7 x 5 in





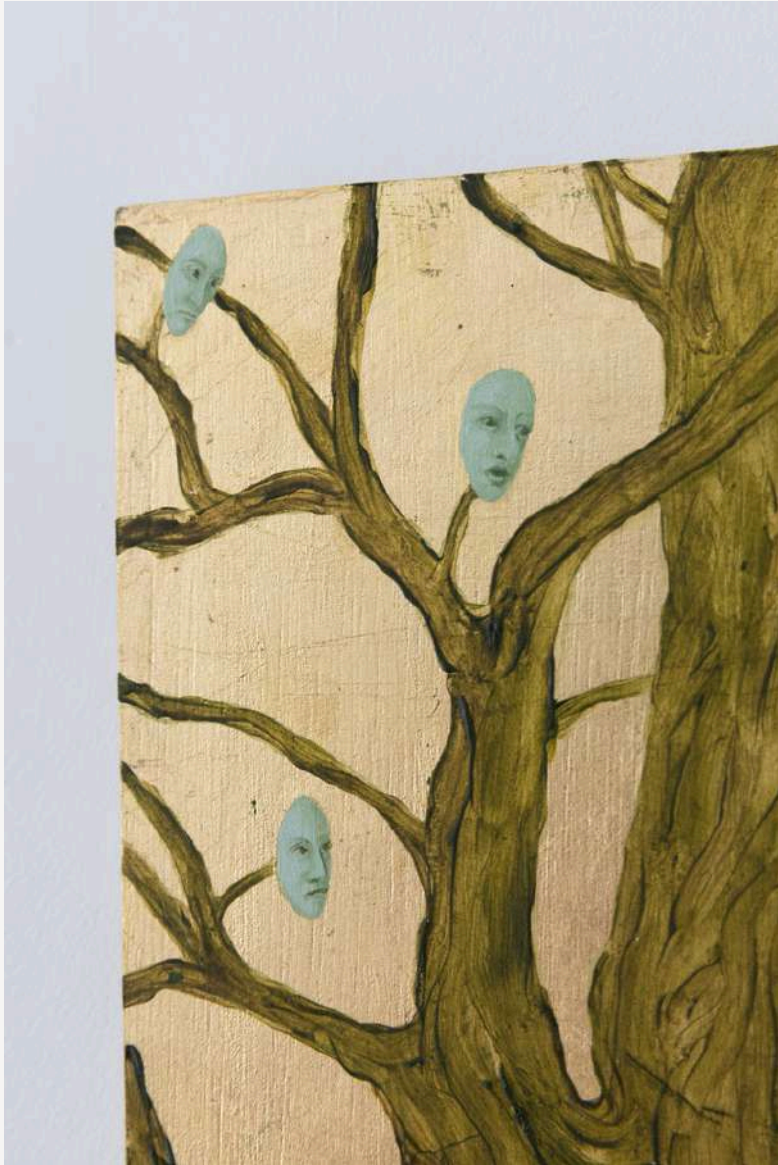




*The conversation*, 2026  
oil and metal leaf on board  
17.8 x 12.7 cm | 7 x 5 in









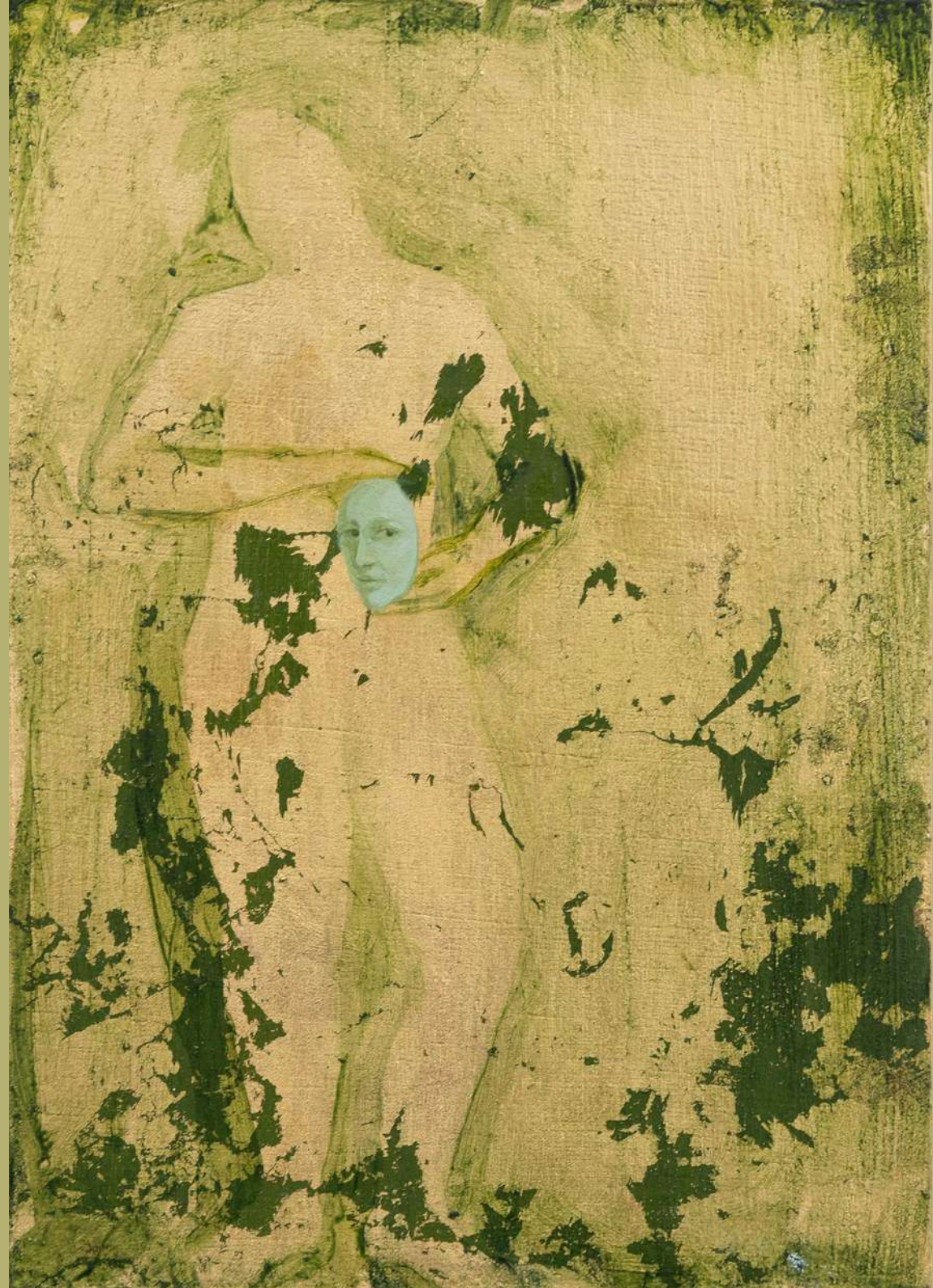
*Spooky action at a distance*, 2026  
oil and metal leaf on board  
17.8 x 12.7 cm | 7 x 5 in

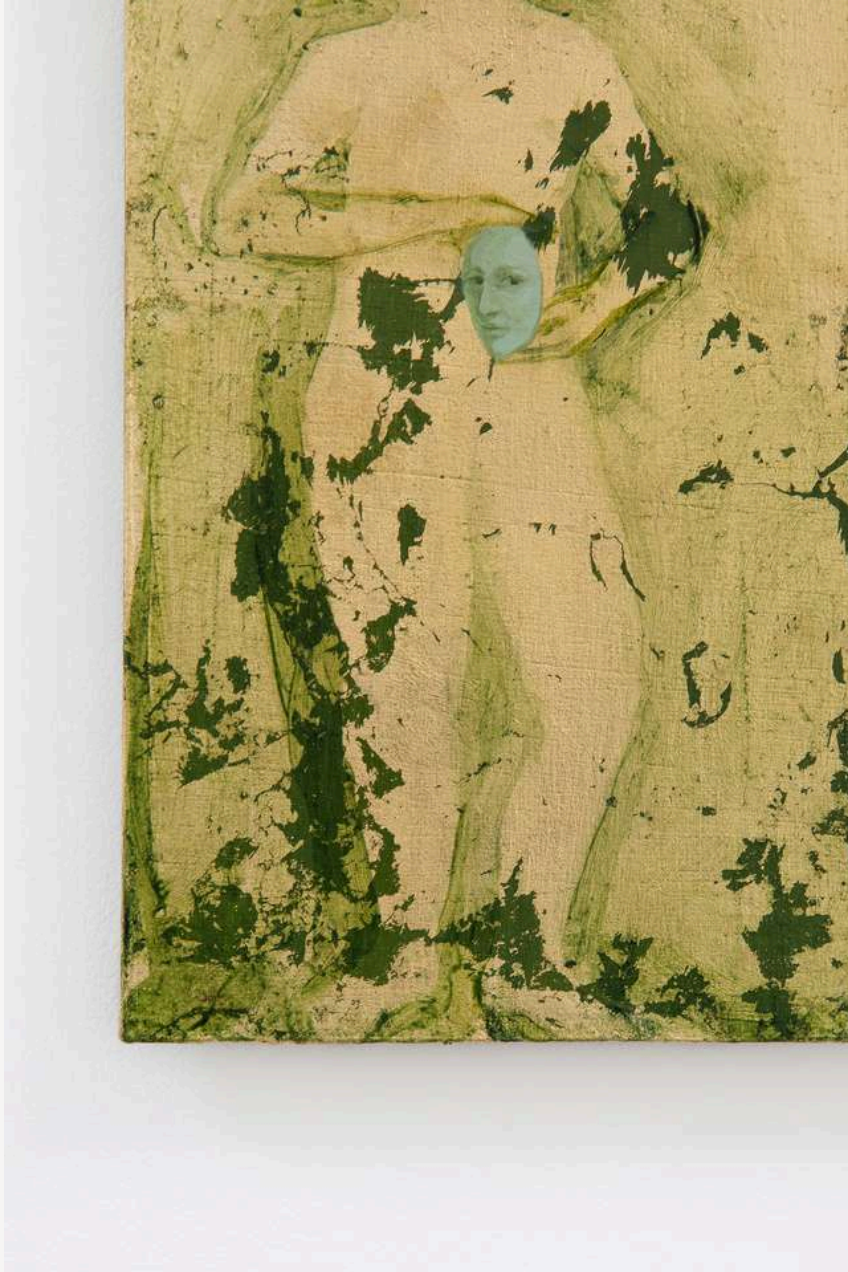






*A sense of history, 2026*  
oil and metal leaf on board  
17.8 x 12.7 cm | 7 x 5 in









(01) VEGETABLE VENUS



(02) THEY CAME UPON A CLEARING



(03) LIKE BEES, I FEEL THEM  
BRUSH SOFTLY AGAINST ME



(10) SPOOKY ACTION



(11) A SENSE OF HISTORY

# CHECKLIST



(04) VOYEUR



(05) I HAVE WAITED SO  
LONG FOR YOU TO LOOK



(06) YIELD



(07) FRUITING



(08) CARRION



(09) THE CONVERSATION

Xanthe Burdett (b. 1995) is an artist from Devon living and working in London. Her practice is led by painting but also encompasses drawing and installation. She graduated from MA Painting at the Royal College of Art in 2024 and received her BA in Education, English and Drama at Cambridge University. Solo shows include Psychopomp with Palo Gallery, New York, and Voices Caught in the Earth with Wilder Gallery, London. Recent group shows include Double Double gallery, Hunna Gallery, Palo Gallery, Huxley-parlour, and Salford Museum. Burdett has exhibited internationally in New York, Beijing, and Kuwait. Her work is held in prestigious institutional collections, including the University of Cambridge, UK; the University of Maryland, USA; and One Atelier, China.

# XANTHE BURDETT



#### EDUCATION

ROYAL COLLEGE OF ART (2023 - 2024)  
UNIVERSITY OF CAMBRIDGE (2015 - 2018)

#### SOLO SHOWS:

2025 PALO GALLERY, PSYCHOPOMP  
2025 WILDER GALLERY AT ECHO ART FAIR, VOICES  
CAUGHT IN THE EARTH

#### AWARDS AND RESIDENCIES

2024 STUDIO WEST - WEST RESIDENCY  
2023 DE LASZLO FOUNDATION YOUNG ARTIST AWARD -  
WINNER  
2023 JACKSONS PAINTING PRIZE - SHORTLISTED  
2022 DE LASZLO FOUNDATION YOUNG ARTIST AWARD -  
HIGHLY COMMENDED

#### GROUP SHOWS:

2026, DOUBLE DOUBLE GALLERY, GREEN WANDERER'S HEART  
2026, HUNNA GALLERY, I DREAMT WE DREAMT OF EDEN  
2025 PALO GALLERY, UNTITLED MIAMI  
2025 PALO GALLERY, ASPEN ART FAIR  
2025 HUXLEY-PARLOUR, FLORA'S CLOAK  
2025 PALO GALLERY, EARLY BIRD  
2025 PALO GALLERY, I AM THE I AM  
2024 STUDIO WEST, WEST RESIDENCY OPEN STUDIOS  
2024 BLUE SHOP GALLERY, WHEN THE CURTAIN FALLS  
2024 SALFORD MUSEUM, OMNIPOTENCE OF A DREAM  
2024 WILDER GALLERY, ARTIST FOCUS  
2024 LILIYA GALLERY, WITHIN AND WITHOUT  
2024 THE ROYAL COLLEGE OF ART, MA DEGREE SHOW  
2024 SARAH KRAVITZ GALLERY, THE UNWRITTEN SCRIPT  
2024 ART ON A POSTCARD, INTERNATIONAL WOMEN'S DAY AUCTION  
2024 ARUSHA GALLERY, PALIMPSESTIC IMPRESSIONS  
2023 BLUE SHOP COTTAGE, WORKS ON PAPER 5  
2023 JACKSON'S PAINTING PRIZE EXHIBITION, BANKSIDE GALLERY  
2022 CYNTHIA CORBETT GALLERY, YOUNG MASTERS ART PRIZE  
2022 BLUE SHOP COTTAGE, WORKS ON PAPER 4  
2021 ROYAL ACADEMY OF ART SUMMER EXHIBITION  
2020 MALL GALLERIES, ROYAL INSTITUTE OF OIL PAINTERS

#### PRESS AND WRITING

YALE RADIO INTERVIEW / PODCAST  
NEW WAVE MAGAZINE INTERVIEW  
WILDER GALLERY INTERVIEW

Wilder Gallery is an independent, woman-owned contemporary art space founded in London in 2020 by Michelle Lee Medjeral-Thomas. Built around a commitment to championing emerging voices, the gallery develops ambitious solo and duo presentations that explore storytelling, materiality, and the human condition, with a dedicated emphasis on women artists.

With a spirit of collaboration at its core—working alongside a global network of artists, curators, and organisations—Wilder has built connections with a broad international collector base, bridging emerging talent with global audiences. Beyond the gallery walls, Wilder's online Artist Focus series fundraises for charitable causes; past exhibitions have raised vital funds for organisations including The Trussell Trust, Mind, Cancer Research, and the Brain Tumour Charity.

---

WILDER

77 COLLEGE ROAD, LONDON, UK, NW10 5ES

WWW.WILDER.GALLERY INFO@WILDER.GALLERY +44 (0)7747 635 823  
@WILDER.GALLERY

WILDER  
GALLERY

### Own Art Interest Free Instalments

Wilder Gallery partners with Own Art, enabling art buyers from the UK to acquire work between £100 - £25,000 over a 10 month interest-free period. Payments are made by direct debit. The artwork is delivered immediately and available to enjoy before the first instalment is paid. If you would like to purchase with Own Art or find out more please email Michelle [info@wilder.gallery](mailto:info@wilder.gallery).

### International buyers

We understand the importance of flexible payment options. We offer interest-free instalments directly with the gallery, and are committed to working with you to create a timeline that suits your purchasing needs. Please contact us to learn more.