

while it holds



GEORGIA BEAUMONT

BOBBYE FERMIE

BEATRICE HASELL-MCCOSH

ROSIE HARBOTTLE

SELBY HURST INGLEFIELD

ANNA KESANIEMI

KATY PAPINEAU

SOPHIE SMORCZEWSKI

Curated in collaboration with Susan Davis

While It Holds considers landscape as a living archive – a place where memory, emotion and experience are held within the natural world. Bringing together painting alongside selected ceramic and sculptural works, the exhibition explores how environments retain traces of lived experience, carrying stories of belonging, inheritance and cultural memory across time.

The title reflects the idea of something briefly suspended: a moment of stillness before light changes, before a season turns, before something slips from view. Across the exhibition, landscape is approached not as static scenery but as something intimate, emotional and shaped by the past. Fields, flowers, gardens and shifting terrains become places where experience and imagination meet.

The artists gathered here share an attentiveness to the natural world, exploring how place can shape identity, preserve stories and evoke personal and collective memory. Landscape becomes a space where histories accumulate like sediment – where traces of family stories, folklore, ritual and lived experience remain embedded within the land.

There is a gentle tension throughout the exhibition between permanence and fragility. Katy Papineau's paintings filter observed landscapes through recollection and imagination, allowing atmosphere, colour and feeling to shape the visible world, while Beatrice Hassell-McCosh explores cycles of growth, decay and renewal through richly layered painterly surfaces.

Georgia Beaumont transforms botanical forms into a personal symbolic language, drawing parallels between the cyclical rhythms of the natural world and our own inner landscapes of thought and emotion. Rosie Harbottle's luminous works weave together folklore, pattern and close observation of place, reflecting on family, belonging and what living systems leave behind. Rooted in time spent in wild landscapes, her paintings consider how stories, rituals and connections to place are carried across generations.

Bobbie Fermie's figures emerge through earthy palettes and intimate compositions that explore intergenerational relationships, inherited connections to land and family histories, while Sophie Smorzewski's dreamlike paintings blur the boundaries between landscape and longing, creating spaces that exist somewhere between the felt and the remembered. Ceramic works by Anna Kesäniemi preserve delicate natural forms in moments of suspended stillness, while Selby Hurst Inglefield's sculptural works evoke the quiet resilience of the natural world, reflecting on growth, transience and what place holds within it.

Throughout the exhibition, flowers bloom and fade, seasons shift and memories are continually remade. Rather than presenting landscape as distant or picturesque, *While It Holds* invites viewers to encounter the land as intimate and embodied – a place where private memory and collective experience meet, through painting, ceramics and sculpture, and where the stories we inherit, remember and pass on remain held within it.



Georgia Beaumont

Red Shrub, 2026

Oil paint on plywood panel
17.7 x 12.5 cm | 6.97 x 4.92 inches



Georgia Beaumont

Red Spider, 2026

Oil paint on plywood panel
12.5 x 17.7 cm | 4.92 x 6.97 inches



Georgia Beaumont

Kiss, 2026

Oil paint on plywood panel
15.1 x 20.3cm | 5.94 x 7.99 inches





Georgia Beaumont

Interlude, 2026

Oil paint on birch plywood panel

90 x 90 cm | 35.43 x 35.43 inches





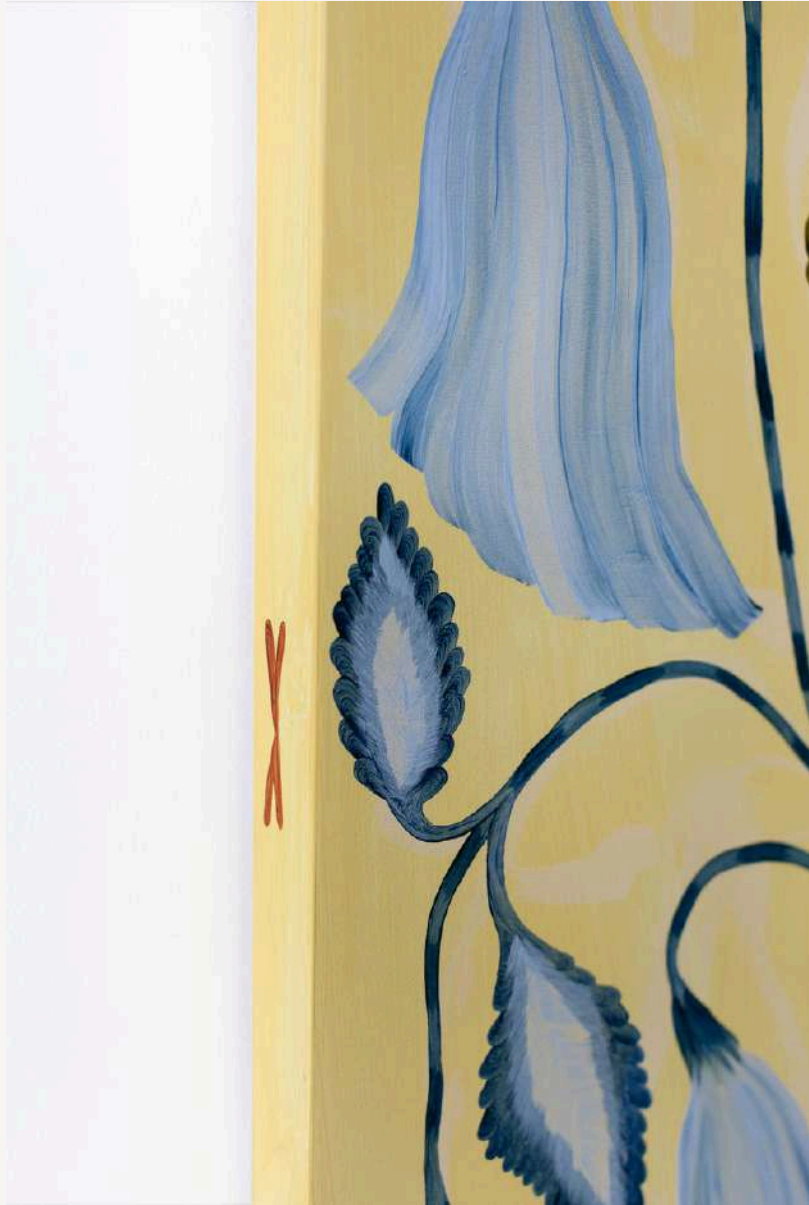
Georgia Beaumont

There is Always Light, 2026

Oil paint on birch plywood panel

120 x 100 cm | 47.24 x 39.37 inches







Bobbye Fermie

Fathers and Daughters on the Land, 2026

Acrylic on canvas

90 x 120 x 3.5 cm | 35.43 x 47.24 x 1.38 inches





Beatrice Hasell-McCosh

London's Message To Mars, 2026

oil on canvas

117 x 86 cm | 46.06 × 33.86 inches





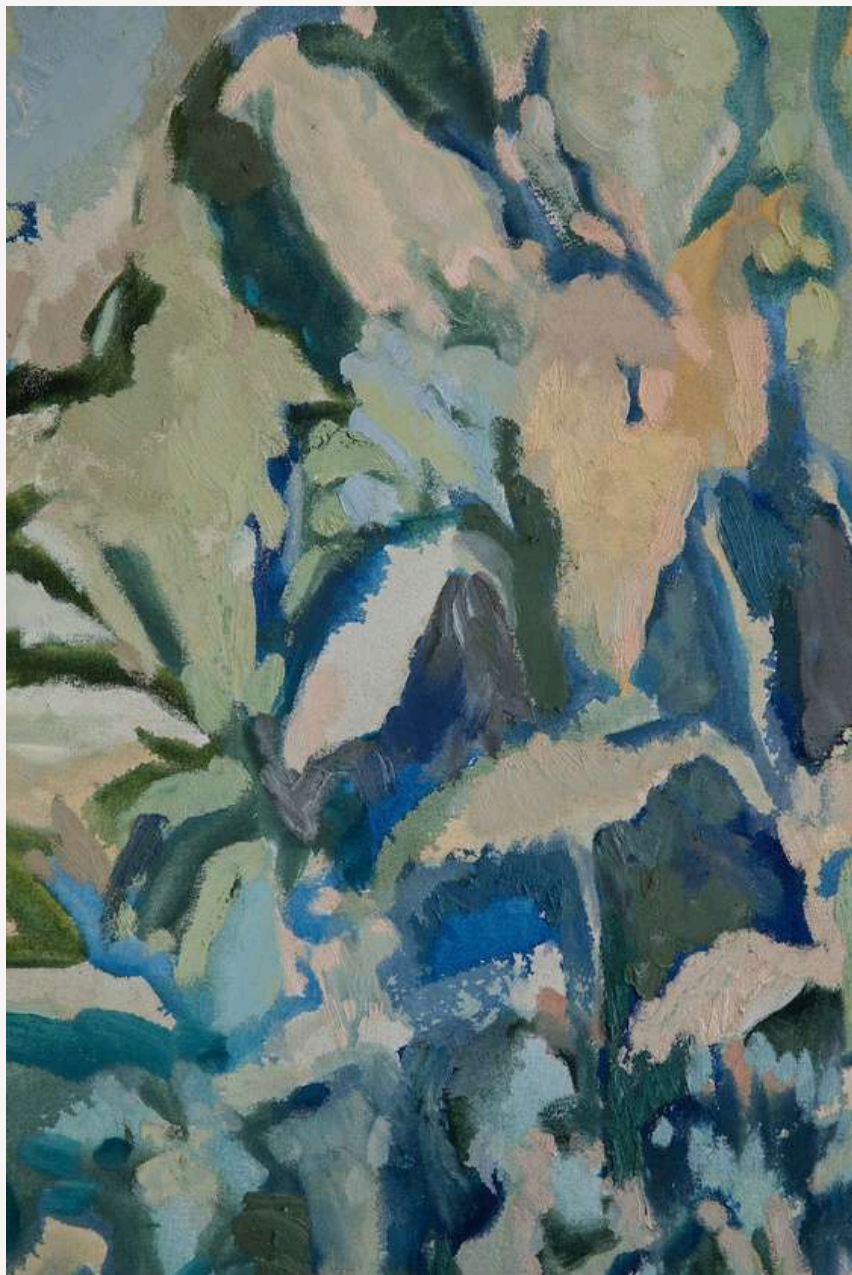
Beatrice Hasell-McCosh

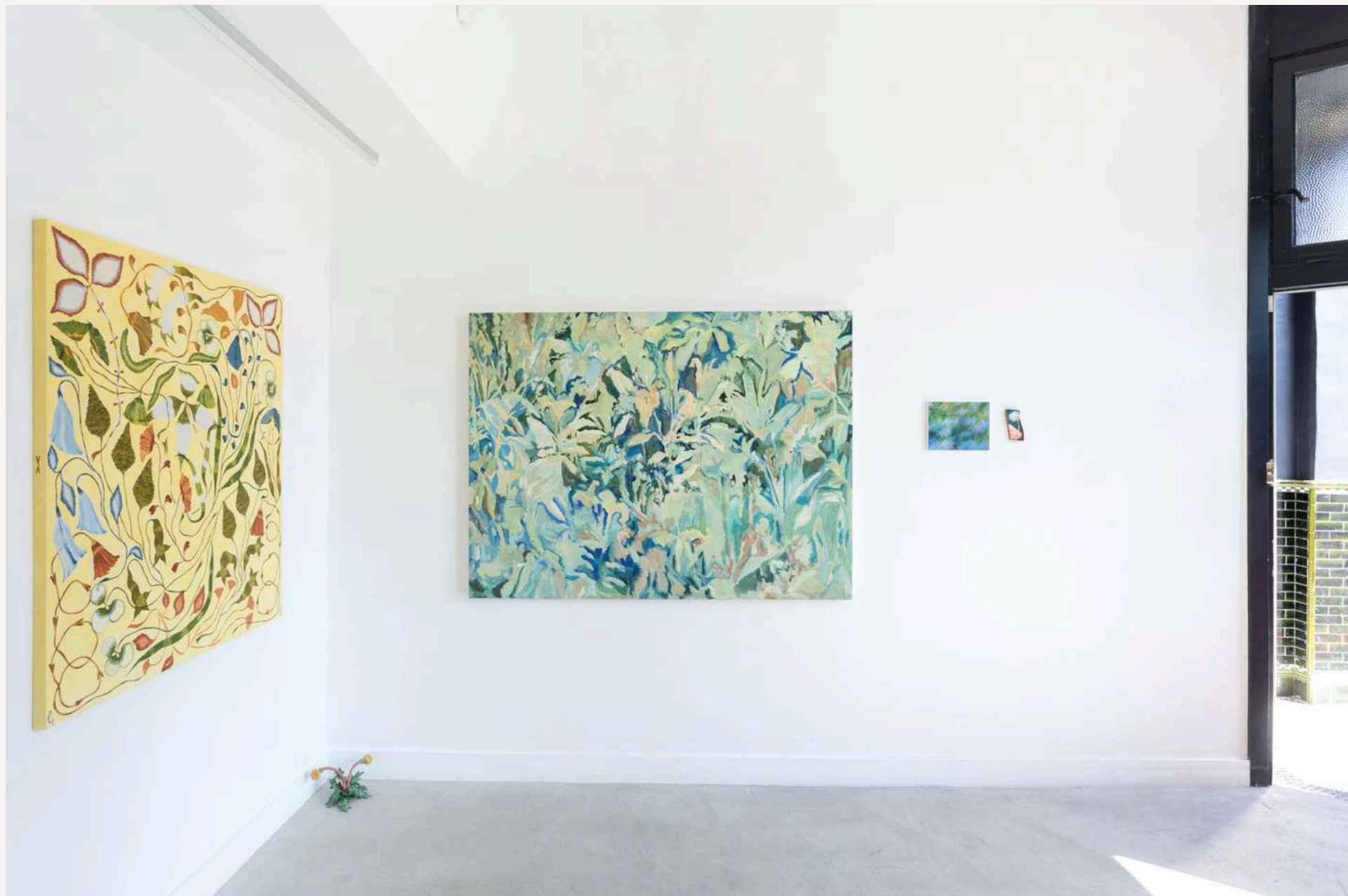
The Borrowed Days, 2025

oil on canvas

160 x 180 cm | 62.99 × 70.87 inches







Rosie Harbottle

It's that Time Again, 2026

Acrylic and collage on canvas

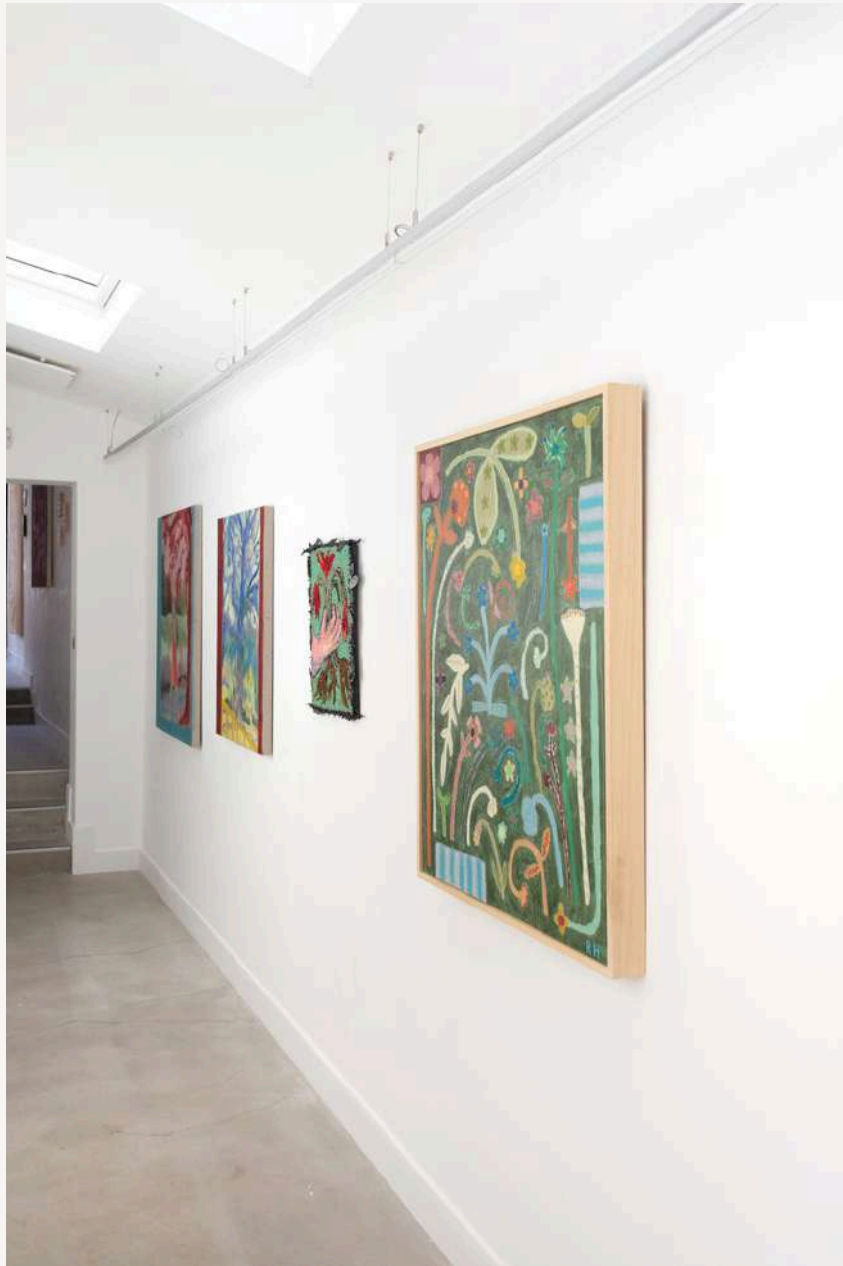
100 x 80cm | 39.37 x 31.50 inches

103 x 83cm (framed dimensions)

40.55 x 32.68 inches (framed dimensions)







Rosie Harbottle

We Sang to the Trees, 2026

Acrylic and collage on linen

180 x 160cm | 70.87 x 62.99 inches

183 x 163cm (framed dimensions)

72.05 x 64.17 inches (framed dimensions)









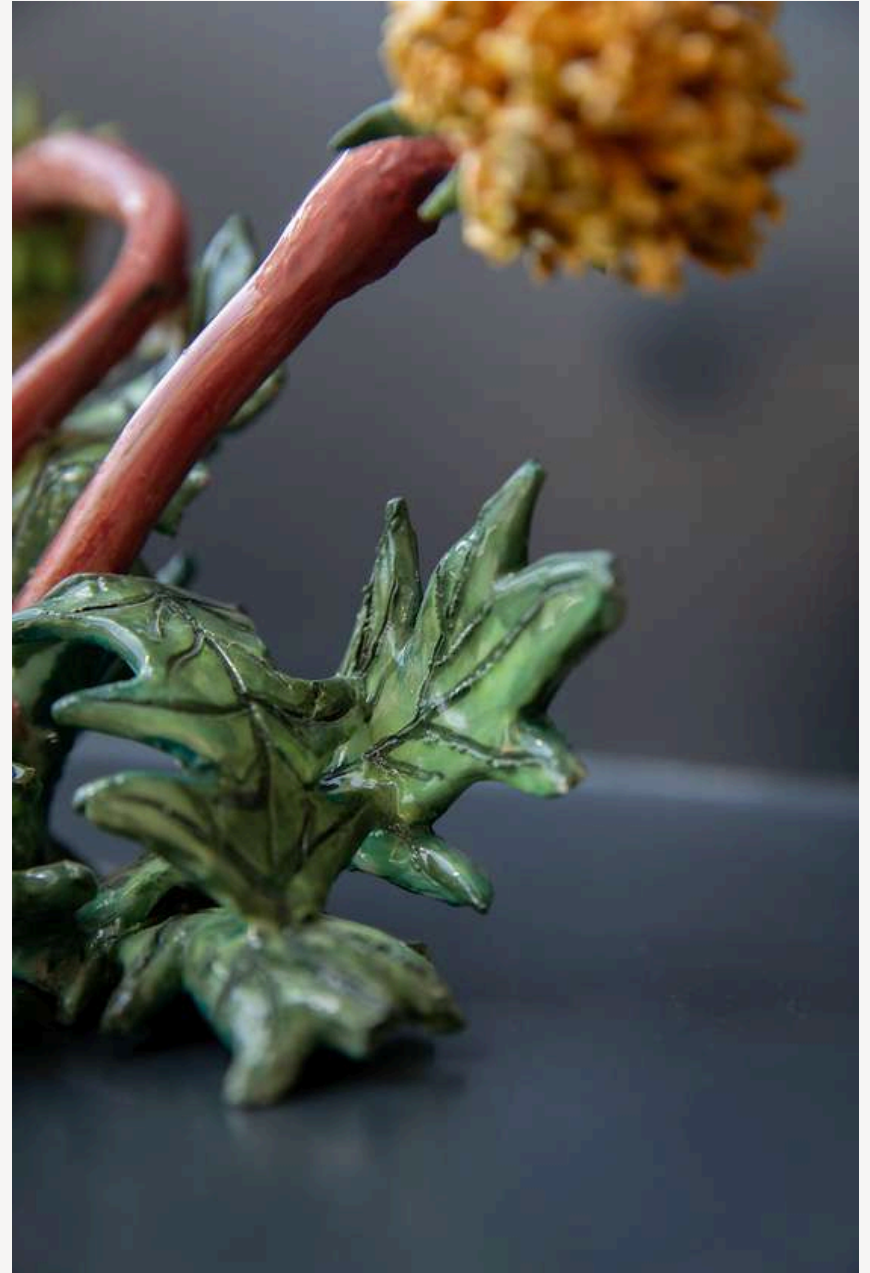
Selby Hurst Inglefield

Gentle friends, 2025

Ceramic

15 x 25 x 20cm | 5.91 x 9.84 x 7.87 inches







Selby Hurst Inglefield

Making Me Float Off The Ground, 2023

wool ceramic, hessian

49 x 37 cm | 19.29 x 14.57 inches







Anna Kesäniemi

The Garden of Many, 2026

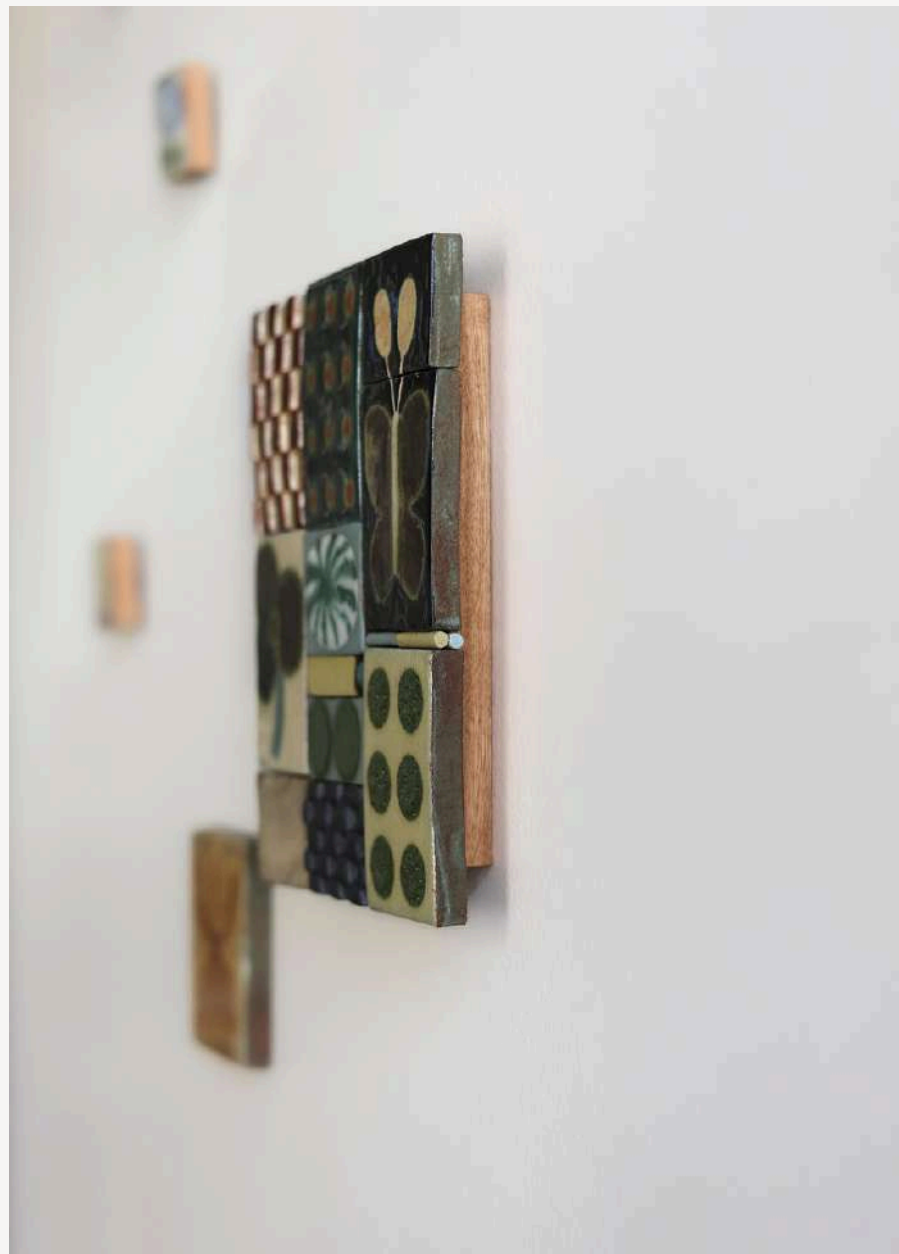
Ceramic wall relief

Glazed stoneware on oak frame

20.7 x 16.7 x 3cm (incl. frame on the back)

8.15 x 6.57 x 1.18 inches (incl. frame on the back)





Anna Kesäniemi

Together, 2026

Wall relief, glazed stoneware

15.5 x 24 x 1cm | 6.10 x 9.45 x 0.39 inches





Anna Kesäniemi

Full Bloom, 2026

Wall relief, glazed stoneware

15.5 x 24 x 1cm | 6.10 x 9.45 x 0.39 inches



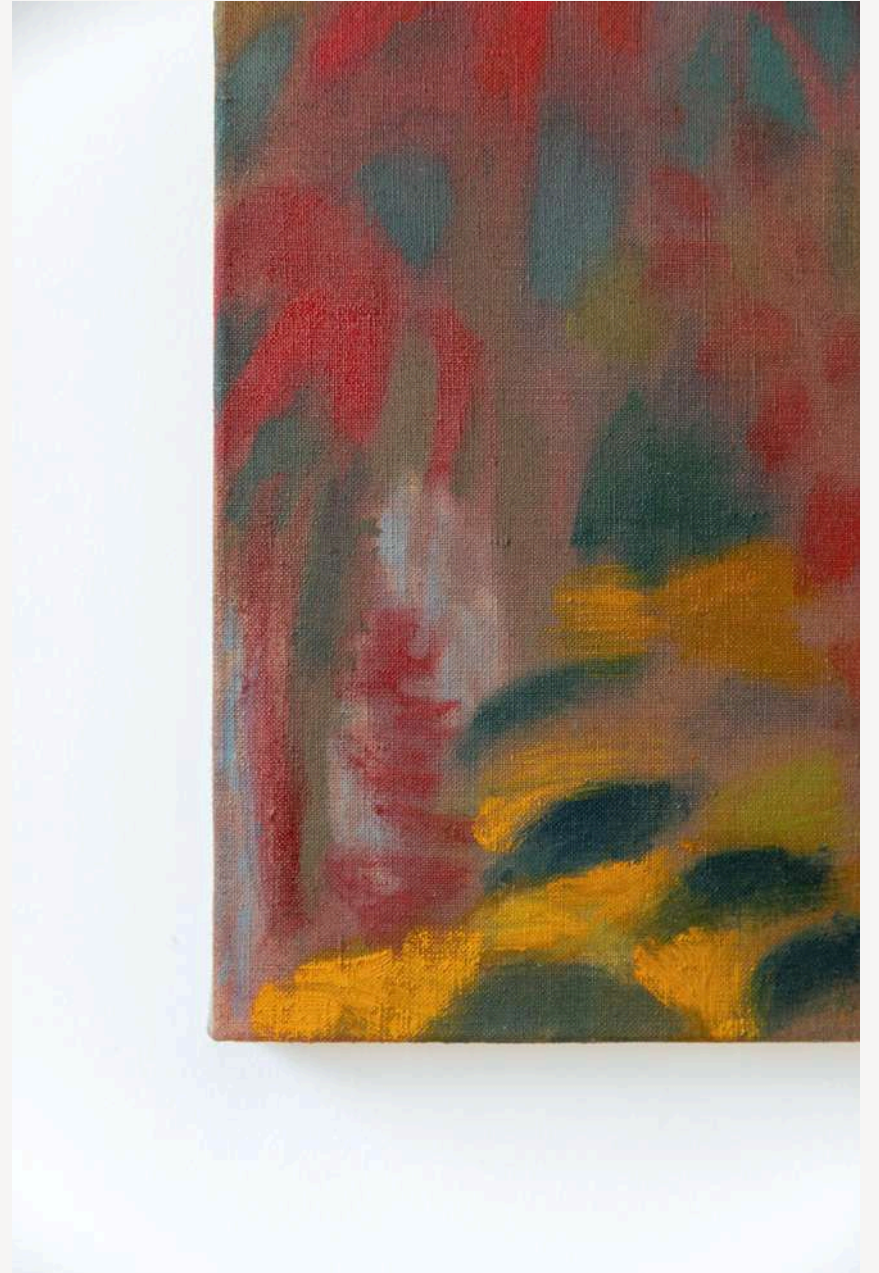
Katy Papineau

Dusk Red, 2026

Oil on linen

36 x 26cm | 14.17 x 10.24 inches



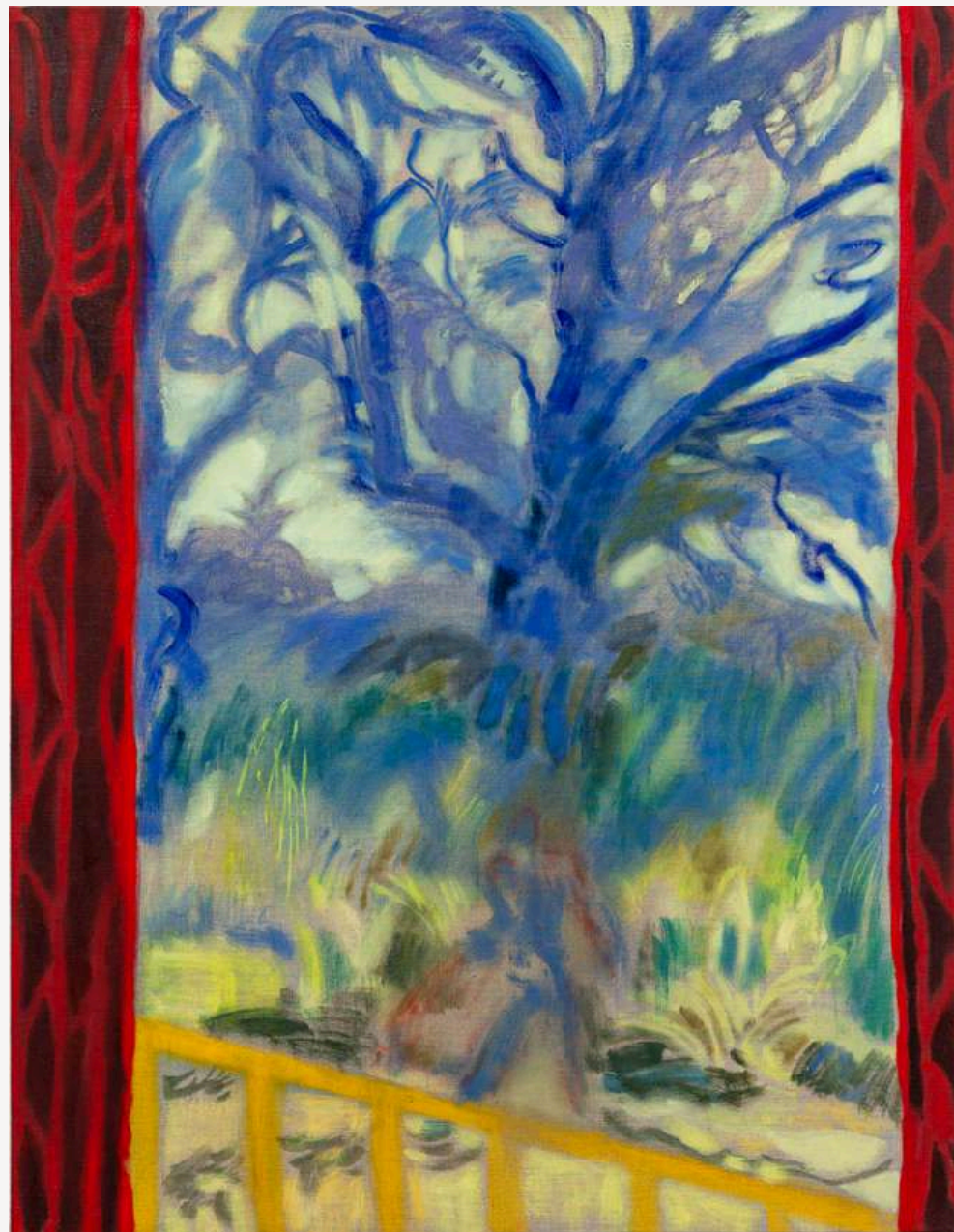


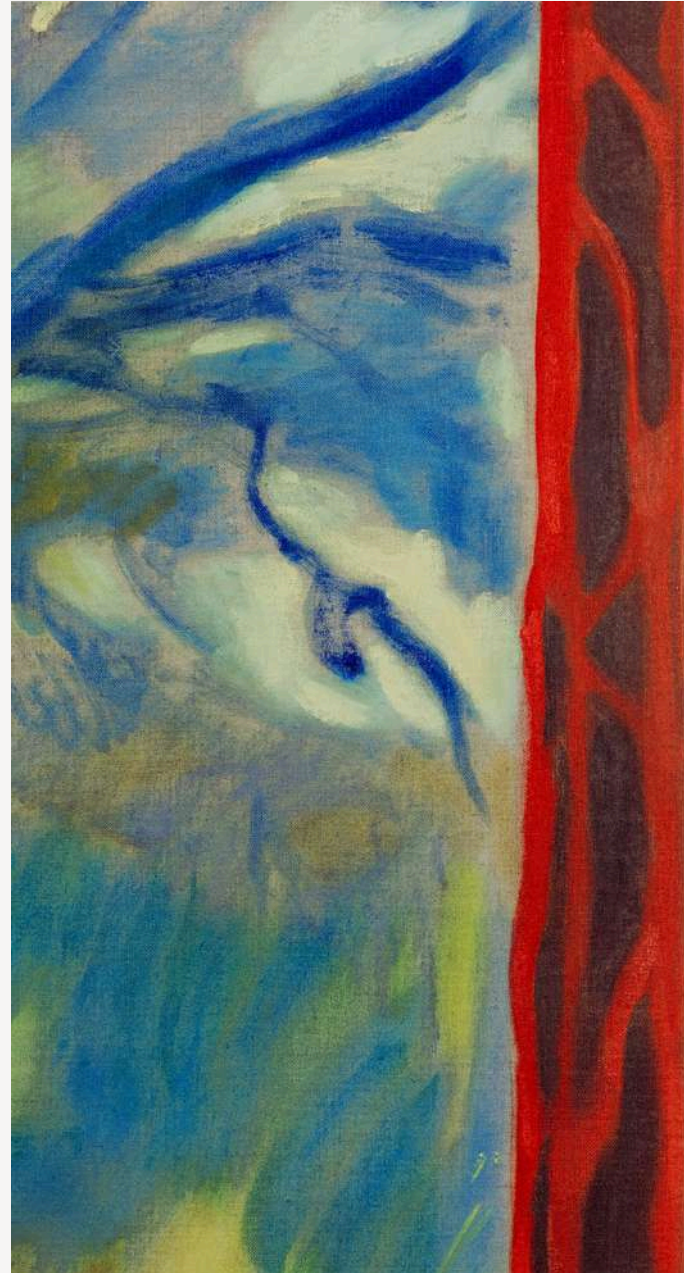
Katy Papineau

In The Trees, 2025

Oil and pastel on linen

90 x 70cm | 35.43 x 27.56 inches





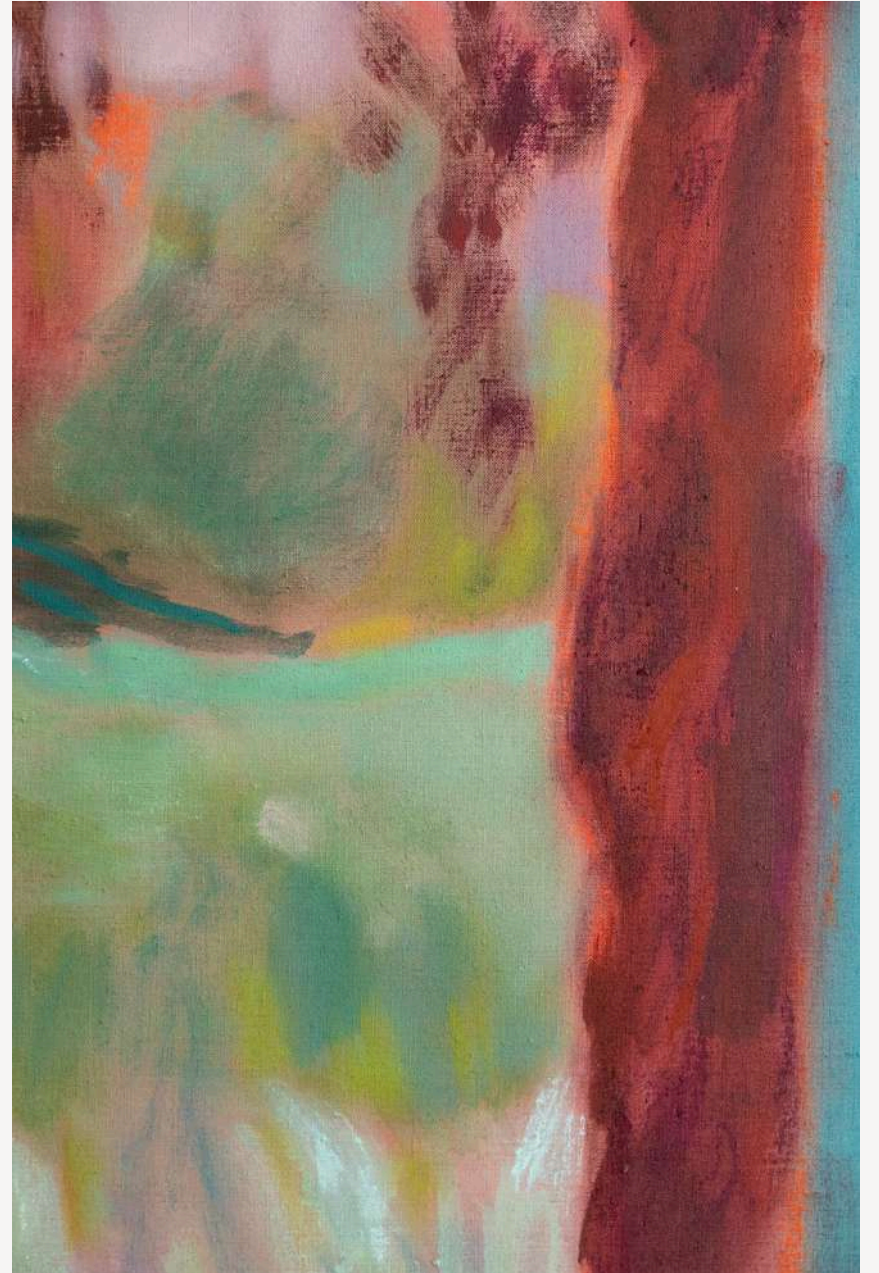
Katy Papineau

Swiftly Tread, 2025

Oil and oil bar on linen

110 x 90cm | 43.31 x 35.43 inches





Sophie Smorzewski

Pinch me, 2026

Oil on oak

6 x 13 x 3 cm



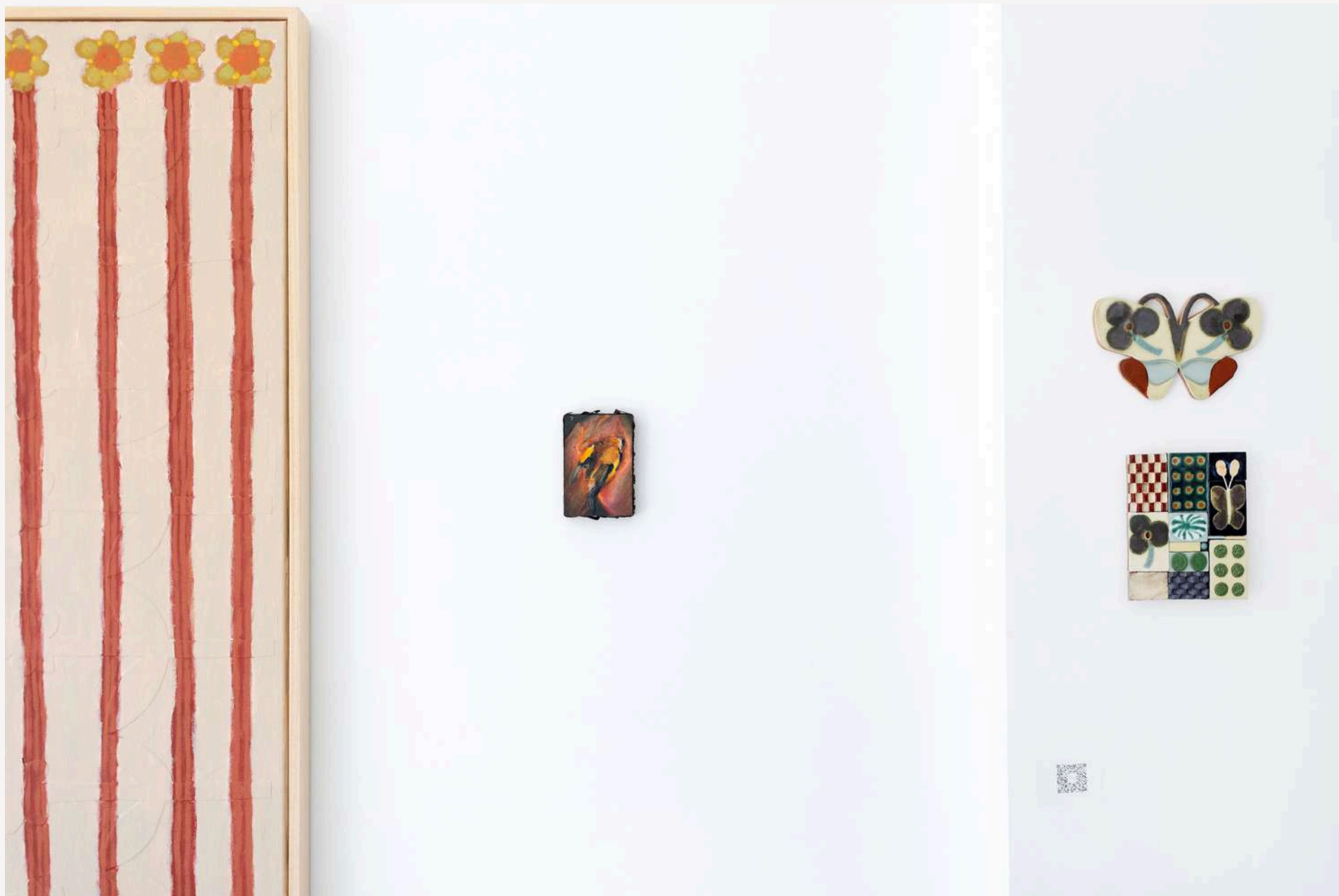


Sophie Smorczewski

The Goldfinch, 2025
Oil on board with beech bark
10 x 15 x 2 cm







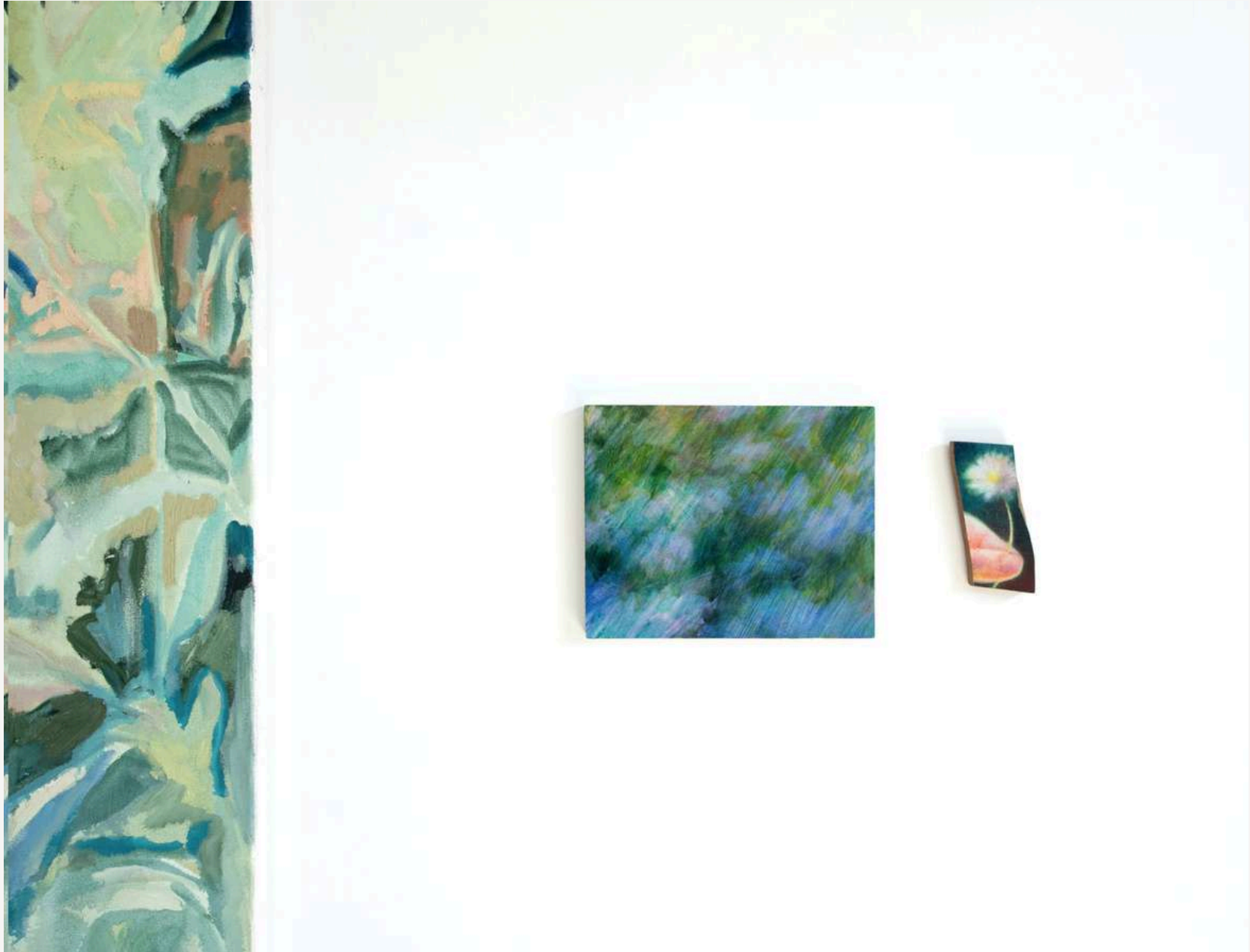
Sophie Smorzewski

A Pattering, 2026

Oil on board

20 x 25 x 3 cm





Georgia Beaumont (b.1996) is a UK-based painter whose practice is rooted in the quiet intricacies of the natural world. Her work explores the poetics of botanical life, its sensuality, fragility, and resilience, through a language of expressive mark-making and organic form. Georgia considers her forms to be a self-generative language, rooted in nature yet imbued with symmetry and sigil-like elements, which meet the more sprawling, intuitive gestures within her compositions. Observing nature, researching its symbolism, and finding solace in both its ephemeral adjustments and its great cyclical change are essential to her practice.

Each work is fused with memory and imagery from the mind's eye, where floral motifs intertwine with gestural brushstrokes, transparent veils, and rigid, opaque stems. Georgia holds these to be physical manifestations of a kinship to the natural world, and ode to its wisdom, as their instinctual, unselfconscious energy echoes nature's output.

Georgia's paintings have been exhibited in London, Barcelona, Milan, Mexico City, and Sydney, and are held in private collections internationally.

GEORGIA BEAUMONT



GEORGIA BEAUMONT

B.1996, UK

SELECT SOLO EXHIBITIONS

2025-HENRY'S WORLD, WILDER GALLERY, LONDON
2025-PETAL TONGUED, THYME IN THE COTSWOLD, CURATED BY WILDER
2025- THE SUM OF OUR PARTS, WILDER GALLERY, LONDON
2024 – LOVE TOKENS, WILDER GALLERY, LONDON, UK
2024-THE SPIRIT'S GAZE, WILDER GALLERY, LONDON, UK

SELECT GROUP EXHIBITIONS

2025, FIELD NOTES, HERRON HOUSE, COSTA MESA, CALIFORNIA
2025- THE PEACE OF WILD THINGS, CURATED BY CLAUDIA CHENG, SOHO REVUE, LONDON UK
2024- MONUMENTS, COHLE GALLERY, PARIS
2024- MUSIC OF THE WAID EARTH, VIOL;ET HOUR, LONDON
2024-REVERENCE, PURSLANE, LONDON
2023- ODE TO AUTUMN, THE VIOLET HOUR, LONDON
2023 – IN MY HAND A FOREST LIES ASLEEP, THE VIOLET HOUR, NOTTING HILL, LONDON, UK
2023 – IN BLOOM, VICTORIA LAW PROJECTS, CHELSEA, LONDON, UK
2023 – 37A COLLECTIVE, SEOUL, SOUTH KOREA
2023 – 8 HOLLAND STREET X COLLAGERIE, LONDON, UK
2022 – BRIGHT YOUNG THINGS, ALEX EAGLE STUDIO, SOHO, LONDON, UK
2022 – BEHIND THE GLUE, CASA LU, MEXICO CITY, MEXICO

2021 - POP UP WITH [DOMENICA MARLAND](#), COMPTON MCRAE, WILTSHIRE
2021 - [FILLE ET.](#), FILET SPACE, HACKNEY, LONDON
2021 - POP UP WITH [DOMENICA MARLAND](#), JM GALLERY, PORTOBELLO ROAD, LONDON
2021 - ACROSS THE RIVER, NEW GRASS GALLERY, CHISWICK, LONDON
2020 - ANTI-FREEZE, VIRTUAL SHOW, CURATED BY [CASSANDRA BOWES](#)
2019 - [SENT FOLDER](#), SYDNEY, AUSTRALIA

RESIDENCIES

2025, THE GRAHAM RESIDENCE, HERRON HOUSE, YUKA VALLEY, CALIFORNIA
2022, CASA LU, MEXICO CITY, MEXICO

PRESS:

FLOURISH ZINE, ISSUE 1, 2024
ARCHITECTURAL DIGEST, OCTOBER 2023
[THE FLORISTRY](#), SEPTEMBER 2023
[OUT OF SEASON](#), AUGUST 2023
[SALON MAGAZINE](#), SUMMER 2023
[LES NOUVEAUX RICHES](#), JULY 2023
[JULIET MAGAZINE](#), JUNE 2023
THE [WORLD OF INTERIORS](#), APRIL 2023
THE [ART UNIT](#), FEBRUARY 2023
LICK, [IN GOOD TASTE MAGAZINE](#), MARCH 2023
[REMOTELY](#), LUCY WILLIAMS NEWSLETTER, NOVEMBER 2022
SHEERLUXE, '[THE COOL NEW ARTISTS TO KEEP AN EYE ON](#)', NOVEMBER 2022
HOUSE OF HACKNEY, [DREAMERS AND SCHEMERS](#), SPRING 2022

COLLECTIONS

PRIVATE INTERNATIONAL COLLECTIONS IN LONDON AND THE WIDER UNITED KINGDOM, PARIS AND BARCELONA, MILAN, MEXICO CITY, SYDNEY AND SEOUL.

Rosie Harbottle is an artist based in the Teign Valley on the edge of Dartmoor, Devon. Drawing on close observation of the natural world, her paintings explore cycles of growth, renewal and transformation through flowers, plants and place.

Memories of a childhood spent exploring wild places continue to inform her practice, alongside an enduring fascination with the relationship between people and nature. She is particularly interested in the traces left behind by living systems; what disappears, what returns, and the layered histories embedded within a landscape. Through colour, pattern and intuitive mark-making, her paintings seek to capture not only the appearance of a plant or place, but its character, memory and emotional resonance.

Influenced by folk art traditions, mythology and music, her work weaves together observation, symbolism and storytelling. Before becoming a full-time artist, Harbottle worked in illustration and textile design, experiences that continue to inform her use of pattern, colour and composition. Her paintings invite a slower way of looking, celebrating the beauty, complexity and interconnectedness of the natural world.

ROSIE HARBOTTLE



ROSIE HARBOTTLE

TEIGN VALLEY, DEVON, UK

EDUCATION

2011 BA (HONS) ILLUSTRATION, FIRST CLASS
UNIVERSITY OF PLYMOUTH, UK

SELECTED SOLO EXHIBITIONS

2025 THE TOMATOES ARE RIPE!, SCROLL, NEW YORK, USA
2024 IN NATURE WE PLAY, GARDEN MUSEUM X TOAST, LONDON, UK

SELECTED GROUP EXHIBITIONS

2026 SPRING SHOW, EASTWOOD FINE ART, HAMPSHIRE, UK
PRIVATE VERNISSAGE, DSWF, AMPNEY PARK, COTSWOLDS, UK
GRAND SHOW, SCROLL NYC, NEW YORK, USA
2025 CHRISTMAS SHOW, EASTWOOD FINE ART, HAMPSHIRE, UK
MILIEU STUDIOS, ST IVES, CORNWALL, UK
3 ARTISTS, EASTWOOD FINE ART, HAMPSHIRE, UK
SPRING SHOW, EASTWOOD FINE ART, HAMPSHIRE, UK
2024 CHRISTMAS SHOW, EASTWOOD FINE ART, HAMPSHIRE, UK
MILIEU STUDIOS, ST IVES, CORNWALL, UK
UNPOLISHED, STOW-ON-THE-WOLD, UK
CHARLESTON HOUSE, FIRLE, UK
SPRING SHOW, EASTWOOD FINE ART, HAMPSHIRE, UK
2023 STYLE YOUR SPACES, EDINBURGH, UK
UNPOLISHED, STOW-ON-THE-WOLD, UK
AUTUMN SHOW, EASTWOOD FINE ART, HAMPSHIRE, UK
ACT ONE ART (ONLINE)
2022 ACT ONE ART AT 99 PROJECTS, LONDON, UK
STYLE YOUR SPACES, EDINBURGH, UK
ACT ONE ART, NOHO SHOWROOMS, LONDON, UK
2021 LIBERTY LONDON, LONDON, UK

RESIDENCIES

2024 ARTIST RESIDENCY, FARASHA FARMHOUSE, MOROCCO
2022 ARTIST RESIDENCY, PRINT CLUB LONDON, LONDON, UK

2018 ARTIST RESIDENCY, THE KIP, AHANGAMA, SRI LANKA

TALKS AND EVENTS

2026 SPEAKER, HETTIE JUDAH EVENT FOR THE LAUNCH OF 'HOW TO ENTER THE ARTWORLD'.

WORKSHOPS AND TEACHING

2026 FIVE-DAY PAINTING COURSE, COOMBE FARM STUDIOS, DEVON, UK
2025 THREE-DAY PAINTING COURSE, COOMBE FARM STUDIOS, DEVON, UK

SELECTED PRESS AND PUBLICATIONS

FINANCIAL TIMES
VOGUE
HARPER'S BAZAAR
FREDERIC MAGAZINE
COLLAGERIE
BLUMENHAUS MAGAZINE
HOMES & ANTIQUES
91 MAGAZINE

SELECTED COMMISSIONS AND COLLABORATIONS

ANTHROPOLOGIE
LIBERTY LONDON
MONICA VINADER
PRINT CLUB LONDON
SOHO HOUSE
THE CONRAN SHOP
TOAST

PREVIOUS PROFESSIONAL EXPERIENCE

ILLUSTRATION AND TEXTILE DESIGN

Kesäniemi multidisciplinary practice moves fluidly between materials and process, from tactile textile design and intricate paper collage to painting and fine clay sculpting. Guided by a foundational expertise in illustration and graphic design, she approaches various materials as distinct opportunities to translate stories, imagination, and graphic structures into physical space.

Independent of the specific medium, Kesäniemi's practice is bound by a rigorous commitment to rich textures, intricate patterns, and bold, unexpected colour compositions. Her creative language is fundamentally defined by a sense of sophisticated playfulness and meticulously rendered narrative details. Drawn to architecture, daily life, and the natural world, she frequently reinterprets familiar organic subjects—such as her highly sought-after, kaleidoscopic ceramic butterfly reliefs, flowers, and foliage—into highly stylized, patterned canvases.

While currently working primarily with ceramics, Kesäniemi remains fascinated by how fleeting ideas, sketches, and visual observations transform into physical, tangible objects. Her ceramic pieces are shaped through a detail-oriented approach that beautifully balances careful composition with the organic unpredictability of the firing and glazing process, where glazes are left to pool, blend, or emerge as sharply defined checkerboards and florals.

Kesäniemi's work is driven by a desire to evoke curiosity and joyful dialogue. Through subtle surface variations, contrasting textures, and layers of graphic rhythm, she invites the viewer to disrupt the fast-paced modern gaze and slow down and fully immerse themselves in the quiet joy of discovery.

ANNA KESÄNIEMI



ANNA KESÄNIEMI

B.1985, HELSINKI, FINLAND

EDUCATION

2018 GRAPHIC DESIGN, HELSINKI DESIGN SCHOOL, HELSINKI, FINLAND

SELECTED SOLO AND DUO EXHIBITIONS

2026 FORTHCOMING ANNA FAIR, PATTERN COLLABORATION AND PRESENTATION OF CERAMIC

WORKS, BOX&NEEDLE, KYOTO, JAPAN

2025 HELSINKI PLAYGROUND, CHRISTMAS CHARITY FUNDRAISER, CERAMIC WORK CONTRIBUTION, HELSINKI, FINLAND

2025 SOLO EXHIBITION, ETT AXCIS, OKAYAMA, JAPAN

2025 PLAYFUL PATTERNS, TEEMAA, HELSINKI, FINLAND

SELECTED GROUP EXHIBITIONS & ART EVENTS

2026 FORTHCOMING SALONKI & SÄLÄ GROUP EXHIBITION, HELSINKI, FINLAND

2026 GROUP EXHIBITION, WILDER GALLERY, LONDON, UK

2025 ONNI ART & DESIGN HOLIDAY MARKET, ISABEL SULLIVAN GALLERY, NEW YORK, USA

2025 GROUP EXHIBITION, SLOW ART GALLERY, FINNISH ART AGENCY, HELSINKI, FINLAND

2025 TUNTU, MUJI SMALL GALLERY, HELSINKI, FINLAND

2025 WHAT IT MEANS TO BE HUMAN, MARCY, HELSINKI, FINLAND

COLLECTIONS

PRIVATE COLLECTIONS IN FINLAND AND INTERNATIONALLY

FEATURES

2026 FORTHCOMING ARTIST FEATURE, SÄLÄ MAGAZINE, FINLAND

2026 ONLINE ARTIST FEATURE, CRAFTERS OF TODAY, SPAIN

2025 FEATURED CERAMIC WORKS, AVOTAKKA MAGAZINE, FINLAND

WORKSHOPS AND PUBLIC PROGRAMMES

2026 FORTHCOMING PAPER COLLAGE WORKSHOPS, HELSINKI, FINLAND

2025 PAPER COLLAGE WORKSHOPS, OKAYAMA, JAPAN

PROFESSIONAL AFFILIATIONS

2019- GRAFIA, ASSOCIATION OF VISUAL COMMUNICATION DESIGNERS IN FINLAND

2019- KUVITTAJAT RY, THE ASSOCIATION OF FINNISH ILLUSTRATORS

Katy Papineau (b.1991, London, UK) is a figurative painter. Her practice encompasses drawing, painting and printmaking. She graduated in Philosophy from the University of Bristol in 2014, and completed The Drawing Year at The Royal Drawing School in 2019.

Papineau is interested in the malleability of memory and ambiguity of human relationships. Her practice begins in observations of everyday life. Drawing in public spaces, she observes people going about their lives and the interactions that take place between them. She takes these drawings back to the studio, allowing the images to gestate in her mind, taking on new meanings and merging with her own history. She paints from pencil drawings and written notes, allowing her inner life to influence her colour choices. Colour is used as a vehicle to express experience beyond the visual - her paintings contain sounds, scents, emotions and memories

She has participated in artist residencies in France, Italy, and Morocco, and has exhibited in Asia, Australia and Europe. Her work is represented in esteemed collections such as the Royal Collection and Moritz-Heyman Collection. Papineau is part of the faculty at the Royal Drawing School, where her teaching focuses on symbolism, memory and imagination.

KATY PAPINEAU



KATY PAPINEAU

B.1991, UK

SELECT SOLO EXHIBITION

2023 - POISON TREE, BLUE SHO GALLERY, LONDON

SELECTED GROUP EXHIBITIONS

2026 - DRAWN TOGETHER, ROYAL DRAWING SCHOOL

2025 - STILL POINT, VILLA ALBA MUSEUM, OTOMYS

2025 - POV, PAUL SMITH SPACE

2025 - DISSONANT BEAUTY, REJINA PYO X WONDERING PEOPLE

2024 - RADIANT DAYS (SOLO), STUDIO ASHBY

2024 - WOOLWICH PRINT FAIR, BLUE SHOP GALLERY

2024 - WHEN THE CURTAIN FALLS, BLUE SHOP GALLERY

2024 - IMPRINT, RHODES CONTEMPORARY

2024 - PAPIER II, DELPHIAN GALLERY

2023 - PAPIER, DEPHIAN GALLERY

Selby Hurst Inglefield (b.1997) is an artist from Brighton, now based in South London. Her practice centres around ideas of safety, protection and care. Through sculpture, textiles, ceramics and found materials, she creates pieces which hold, frame or shelter. Often taking the shape of wall-hung sculptures that suggest protective spaces or structures.

Drawing from personal experience and everyday life, her work often gravitates towards overlooked or fragile moments. She is interested in the desire to hold onto things as they change, fade or disappear, and to care for or protect what feels vulnerable. Flowers appear throughout her work as symbols of fragility, care and the passing of time. Through using craft and slow processes, she transforms materials into objects that physically carry memory, creating forms that feel both protective and vulnerable. Her practice explores the tension between softness and permanence.



SELBY HURST INGLEFIELD

SELBY HURST INGLEFIELD

B.1997, UK

EDUCATION

2016-2019 FINE ART BA AT CENTRAL ST MARTINS

2015-16 FOUNDATION DIPLOMA AT CENTRAL ST MARTINS

SELECTED SOLO EXHIBITIONS

2023 - THE CATS CRADLES, THE KNITTING AND STITCHING SHOW,
ALEXANDER PALACE, SEPT

2022 - CRADLE, REEM GALLERY, LONDON, SEPT

2020 - BACK LOOKING THROUGH THE GLASS, PEAK, LONDON

SELECTED GROUP EXHIBITIONS

2026 - COLLECT ART FAIR, SOMERSET HOUSE, LONDON

2025 - ULSAN INTERNATIONAL ART FAIR, ULSAN, SOUTH KOREA

2025 - BUSAN COVE ANANTI ISLAND, ANANTI HOTEL, BUSAN, SOUTH
KOREA

2025 - THREADING NARRATIVES, VILLA OASIS, ULSAN, SOUTH KOREA

2025 - COLLECT ART FAIR, SOMERSET HOUSE, LONDON

2024 - ALVERSTON FINE ART, LONDON

2024 - SOMEWHERE BEYOND THE TIDE, THE WIND WHISPERS, 2024 -
LONDON ARTIST BEHIND BARS, THE BOMB FACTORY, LONDON

2024 - DAUGHTERS FOR EARTH, MARIE JOSE GALLERY, LONDON 2024
- ALVESTON FINE ART, LONDON

2023 - TWO BY TWO, BRUSHES WITH GREATNESS, FEB, LONDON
INTERACTIONS, GALERIE ZBERRO, PARIS

2023 - ALVERSTON FINE ART, LONDON KACAW, BRUSHES WITH
GREATNESS, JUNE, LONDON TEXTILES JUNCTION, ST LEONARDS,
HASTINGS

2023 - ALVERSTON FINE ART, LONDON

2023 - JUST A BUNCH OF STRING, LONDON

2023 - ALVERSTON FINE ART, LONDON

2023 - THE FOREVER NOW, 67 YORK STREET, LONDON

2023 - CATS AND DOGS, LIVINGSTONES FINE ART, BRISTOL

2023 - ALVERSTON FINE ART, LONDON

COLLECTIONS

SOHO HOUSE COLLECTION

PRIVATE COLLECTIONS WORLDWIDE

Beatrice Hasell-McCosh uses natural form as the lens to explore cyclicity and identity (geographical and imagined), narrative of memory and materiality of paint. Drawing is central to her practise and she uses closely scrutinised studies made from life to make large-scale paintings. Her often unplanned composition is drawn from memory as well as the studies and, in playing with scale, the focus of importance gives way from direct figurative representation, to a flattened abstraction. Space (negative and positive), texture and gestural use of colour become the central feature of the work. Many of the works are presented in parts (a motif which began after a trip to Japan in 2018). Kintsugi - the idea of beauty in imperfection - has been a significant factor of much of the work . As a twin she is attracted to multiple parts that make up a whole.

Vibrations of texture and the rhythm of nature are at the centre of the work. Watching and drawing from the same spots continuously, seeing plants grow up crowd together, bloom and die, and being replaced with the new. A childhood on a farm in the Northern Lake District provided a deep knowledge and love of the cyclicity of natural life. Though two dimensional, the viewers experience is multi-sensory. The works are windows into nature and a feeling of the painters experience.

Her work is held in a number of public collections including the Birmingham Museum of Art, Alabama, USA, The Aardt Foundation, Alambama, USA, Hauser & Wirth (The Groucho Club), London, UK, The Garden Museum, London, UK, The Ligabue Foundation, Venice, Italy and the Royal Collection Trust, UK.

BEATRICE HASELL-MCCOSH

BEATRICE HASELL- MCCOSH

B.1990 , WHITEHAVEN, UK. CURRENTLY LIVES AND WORKS IN LONDON, UK.

SELECT SOLO EXHIBITIONS

2026 - WORKS ON PAPER AS PART OF THE SERIES ANTHOLOGIA, THE VIOLET HOUR, ONLINE

2025 - MONOTYPES, MESSUMS LONDON

2024 - SOLO SHOW, ANDANTE, CURATED BY JENN ELLIS & APSARA STUDIO, ST CYPRIANS CHURCH,LONDON

SELECT GROUP EXHIBITIONS & RESIDENCIES

2026 - WHILE IT HOLDS, WILDER GALLERY, LONDON, CO-CURATED BY SUSAN DAVIS

2026 - TABLE MANNERS, BARBATI GALLERY, VENICE, CURATED BY PIA OTTES

2026 - PAINTING - A CHANGED ENVIRONMENT, MESSUMS WEST, WILTSHIRE, UK

2026 - ENCHANTED GARDENS, GILLIAN JASON, LONDON

2026 - TERRENCE HIGGINS TRUST CHARITY GROUP SHOW, CHRISTIES, LONDON

2026 - GROUP SHOW, CURATED BY LUCY VON GOETZ, CROWSLEY PARK, OXFORDSHIRE

2025 - LANDSCAPE PAINTING TODAY, MESSUMS WEST, WILTSHIRE

2025 - ONE OFF, MESSUMS LONDON

2025 - THE PEACE OF THE WILD THINGS, SOHO REVUE, CURATED BY CLAUDIA CHENG, LONDON

2025 - BE NICE, NOHO STUDIO CURATED BY MARC DUVIVIER, LONDON

2025 - SCENE XII: EDEN, , MATT CAREY-WILLIAMS, LONDON

2025 - GROUP SHOW, RHEGED GALLERY, CUMBRIA

2025 - ART ON A POSTCARD, LONDON

2025 - STAGE II, CURATED BY JAMES MOORE AND LIAM WHITE, BAY ART, CARDIFF

2025 - STAGE III, CURATED BY JAMES MOORE, LIAM WHITE AND ABBIE BIRKINSHAW, MIRROR, PLYMOUTH

2025 - GROUP SHOW, EASTWOOD FINE ART, HAMPSHIRE

2025 - WOOLWICH CONTEMPORARY PRINT FAIR, LIZZIE GLENDINNING

2025 - FREEDOM FROM TORTURE, SOTHEBYS, LONDON

2025 - GROUP SHOW, EASTWOOD FINE ART, HAMPSHIRE

2025 - THE ART UNIT, ONLINE

2024 - ALL THIS WRATH, BLUE SHOP GALLERIES, LONDON

2024 - MOMENTS OF GLAD GRACE, THE VIOLET HOUR, ABBOTT & HOLDER, LONDON

2024 - SPRING, EASTWOOD FINE ART, HAMPSHIRE

2024 - WORKS ON PAPER 6, BLUE SHOP GALLERIES, LONDON

2024 - ARTIST IN RESIDENCE FOR ULA MARIA'S MUSCULAR DYSTROPHY GARDEN AT RHS CHELSEA FLOWER SHOW

2024 - PROMISES TO KEEP, THE VIOLET HOUR, ONLINE

SCAPE PAINTING TODAY, MESSUMS, ONLINE

2024 - TERRA, BURGUNDY, CURATED BY JENN ELLIS, FRANCE

2024 - MORTLAKE TAPESTRY RESTORATION FUNDRAISING EXHIBITION, GARDEN MUSEUM, ONLINE

2024 - SMALL WATERCOLOURS IN AID OF REFUGE, ONLINE

Born in Amsterdam and based in London, Bobbye Fermie makes paintings, works on paper, and prints that focuses inward — to the domestic room, the lone figure, the charged quietness of a space that holds more than it shows. Her practice centres on female protagonists drawn from her own emotional experience rather than any direct likeness, placed in interiors that sit somewhere between the personal and the universal. The result is work that is, in her own words, dreamlike, quiet, and intimate: scenes that feel suspended, as though the outside world has been held briefly at bay. Fermie works across watercolour, collage, and — since 2023 — printmaking. That shift brought a new element into the work: a male figure appearing alongside the female, complicating the earlier solitude and opening questions about proximity, difference, and the dynamics between people sharing a space. Her work is held in the Royal Collection, the Moritz-Heyman Collection, and Soho House. Solo and joint exhibitions include *Man and Woman in Garden* with Jake Garfield at Oliver Projects, London (2026); *16 One Act Plays* at Wilder Gallery, London (2024); and *Familiar Soil* at Skitsehandlen, Denmark (2024). She has shown at the Royal Academy of Arts Summer Exhibition, London Art Fair, and London Original Print Fair, and was selected as one of Artsy's 5 Artists on our Radar in January 2026. Residencies include Villa Lena (Tuscany), Porthmeor Studios (Cornwall), and Dumfries House (Scotland). Fermie holds a BA in Fine Art from the Royal Academy of Fine Arts, Antwerp, and a Postgraduate Diploma from the Drawing Year at the Royal Drawing School, London.

BOBBYE FERMIE



BOBBYE FERMIE

B.1990 , DUTCH. CURRENTLY LIVES AND WORKS IN LONDON, UK.

EDUCATION

2014–2015: ROYAL DRAWING SCHOOL (LONDON, UK) – POST GRADUATE DIPLOMA, THE DRAWING YEAR

2011–2014: ROYAL ACADEMY OF FINE ARTS ANTWERP (ANTWERP, BELGIUM) – BA FINE ART / SITE SPECIFIC ART

2009–2010: ROYAL ACADEMY OF ART THE HAGUE (THE HAGUE, NETHERLANDS) – PHOTOGRAPHY

SOLO & JOINT EXHIBITIONS

2026: MAN AND WOMAN IN GARDEN (JOINT SHOW WITH JAKE GARFIELD), OLIVER PROJECTS

2024: FAMILIAR SOIL, SKITSEHANDLEN (DENMARK)

2024: 16 ONE ACT PLAYS, WILDER GALLERY

2023: TO SET THE STAGE (ONLINE SOLO), ARTIST FOCUS, WILDER GALLERY

2021: SOFT SHADOWS (JOINT SHOW WITH EMILY FAIRLIE BAKER), 155A GALLERY

SELECTED GROUP EXHIBITIONS

2026

SUMMER EXHIBITION, ROYAL ACADEMY OF ARTS (16/06- 23/08)

WHILE IT HOLDS, , WILDER GALLERY X ART CITY WORKS , WILDER GALLERY

DRAWN TOGETHER, ROYAL DRAWING SCHOOL

ANTHOLOGIA VI (ONLINE), VIOLET HOUR

2025

P.O.V, PAUL SMITH FOUNDATION

WOOLWICH CONTEMPORARY PRINT FAIR, SOHO REVUE

SUMMER EXHIBITION, ROYAL DRAWING SCHOOL

WHAT SHE SAID (ONLINE), PURSLANE GALLERY

2024

WOOLWICH CONTEMPORARY PRINT FAIR, OLIVER PROJECTS

THE RESIDENCY, CURA ART AT CHRISTIE'S LONDON

ARTSY FOUNDATIONS, SUMMER EDITION, WILDER GALLERY

THE PRINT REVUE, SOHO REVUE

PROMISES TO KEEP (ONLINE), THE VIOLET HOUR

SUMMER EXHIBITION, ART FOR CHARITY COLLECTIVE

WHAT SHE SAID (ONLINE), PURSLANE GALLERY

LONDON ORIGINAL PRINT FAIR, SOHO REVUE

ORIGINS, RHODES CONTEMPORARY ART

LONDON ART FAIR, 155A GALLERY

2023

THE PEACE OF WILD THINGS (ONLINE), THE VIOLET HOUR

GROUPSHOW, A MON AVIS, COPENHAGEN

WOOLWICH CONTEMPORARY PRINT FAIR, OLIVER PROJECTS

THE FOREVER NOW, ART CITY WORKS

SUMMER EXHIBITION, ROYAL ACADEMY OF ARTS

IN MY HAND A FOREST LIES ASLEEP, THE VIOLET HOUR

OPENING, A MON AVIS, COPENHAGEN

TALES OF THE HOME (ONLINE), OLIVER PROJECTS

AWARDED RESIDENCIES

THE RESIDENCY, VILLA LENA, TUSCANY, SUPPORTED BY PATRON KATY WICKREMESINGHE, JUNE 2024

PORTHMEOR STUDIOS, CORNWALL, JAN-FEB 2021, NOV-DEC 2023 AND NOV 2025

DUMFRIES HOUSE, SCOTLAND, 2016, 2017, 2018, 2022

COOMBES FARM DEVON, 'HOW TREES TALK' APRIL 2019

HAFOD ESTATE, WALES, SEPTEMBER 2018

BORGIO PIGNANO, TUSCANY, OCTOBER 2016

COLLECTIONS

PRIVATE AND PUBLIC COLLECTIONS, INCLUDING: THE ROYAL COLLECTION, MORITZ-HEYMAN COLLECTION, SOHO HOUSE COLLECTION

Sophie Smorczewski is a London-based artist who immortalises nature's moments of fragility in paint. Her practice is grounded in close attention to the natural world and to what is lost in the moment of looking.

Drawing from a period of illness in which the bed became a primary site of living, Smorczewski found in it a hotspot of activity rather than a passive, dormant space. Here, the active mind drifts, suspended between states of half-dreaming and half-awake. She equates her bed to the flower bed in its tender nurturing where seeds of growth are planted and patiently wait for bloom, interior spaces expanding into the natural world.

Working in oil on canvas, wood, and silk, Smorczewski explores a melancholy for the fleetingness of natural things. Gathered materials root the ephemeral in the tactile. Collected objects such as a shell taken from the beach, a plant cut and dried, a section of oak, are removed from their environments, interrupting their return to their natural cycles. The transient nature of living things is held and extended in paint.

Smorczewski graduated from the Slade School of Fine Art, UCL (2025), where she was awarded the Cass Art Painting Award. She previously attended the Manchester School of Art (2021), graduating with the Manchester Academy of Fine Art Prize. Her work has been featured in numerous exhibitions, including 'Sown in Slumber' at LAMB Gallery (Solo, 2026), 'The Blue of Distance' at SETERAH (2026) and 'IMMATERIAL' at Soho Revue (2025)

SOPHIE SMORCZEWSKI



SOPHIE SMORCZEWSKI

B.1999 , BRITISH. CURRENTLY LIVES AND WORKS IN LONDON, UK.

EDUCATION

2023–2025: SLADE SCHOOL OF FINE ART, UCL (LONDON, UK) – MFA IN PAINTING

2018–2021: MANCHESTER SCHOOL OF ART (MANCHESTER, UK) – BA (HONS) FINE ART

SOLO EXHIBITIONS

2026: SOWN IN SLUMBER, LAMB GALLERY (LONDON, UK)

2025 A SLEEPING GARDEN STILL GROWS, SLADE SCHOOL OF FINE ART, LONDON

GROUP EXHIBITIONS

2026

THE SUN AND THE MOON, SAATCHI GALLERY, LONDON, UK

THE BLUE OF DISTANCE, SETAREH (BERLIN, GERMANY)

SKIN OF A FEELING, ARTISTELLAR PROJECT (LONDON, UK)

2025

NATURAL RECALL, ARDEN + WHITE GALLERY, CT, US

IMMATERIAL, SOHO REVUE, LONDON, UK

THROUGH THE SPLINTERS, SILIAN GALLERY, LONDON, UK

MOVING PRINCIPAL, ARUSHA GALLERY, LONDON, UK

I'M ROOTED, BUT I FLOW, THE ART OFFICE, LONDON, UK

2024

WORKS ON PAPER 6, BLUE SHOP GALLERY, LONDON, UK

CHARITY AUCTION FOR PALESTINE, SHAPES AND THINGS, LONDON, UK

RESIDENCIES & AWARDS

2025–2026: STUDIO WEST ARTIST RESIDENCY (LONDON, UK)

2025: THE CASS ART PAINTING AWARD (SLADE SCHOOL OF FINE ART)

2021: THE MANCHESTER ACADEMY OF FINE ART AWARD (MANCHESTER SCHOOL OF ART)

COLLECTIONS

PRIVATE COLLECTIONS IN THE UK AND INTERNATIONALLY

Own Art Interest Free Instalments

Wilder Gallery partners with Own Art, enabling art buyers from the UK to acquire work between £100 - £25,000 over a 10 month interest-free period. Payments are made by direct debit. The artwork is delivered immediately and available to enjoy before the first instalment is paid. If you would like to purchase with Own Art or find out more please email Michelle info@wilder.gallery.

International buyers

We understand the importance of flexible payment options. We offer interest-free instalments directly with the gallery, and are committed to working with you to create a timeline that suits your purchasing needs. Please contact us to learn more.

Wilder Gallery is an independent, woman-owned contemporary art space founded in London in 2020 by Michelle Lee Medjeral-Thomas. Built around a commitment to championing emerging voices, the gallery develops ambitious solo and duo presentations that explore storytelling, materiality, and the human condition, with a dedicated emphasis on women artists.

With a spirit of collaboration at its core—working alongside a global network of artists, curators, and organisations—Wilder has built connections with a broad international collector base, bridging emerging talent with global audiences. Beyond the gallery walls, Wilder's online Artist Focus series fundraises for charitable causes; past exhibitions have raised vital funds for organisations including The Trussell Trust, Mind, Cancer Research, and the Brain Tumour Charity.

WILDER

77 College Road, London, UK, NW10 5ES

www.wilder.gallery info@wilder.gallery +44 (0)7747 635 823
[@wilder.gallery](https://www.instagram.com/wilder.gallery)

WILDER
GALLERY