

A detailed botanical illustration serves as the background for the entire page. It features a variety of plant elements: light blue bell-shaped flowers with yellow centers, green leaves with prominent veins, and a large, textured green seed pod or fruit. Thin, winding green vines and stems are scattered throughout the composition. The style is reminiscent of traditional botanical art, with fine lines and a soft color palette.

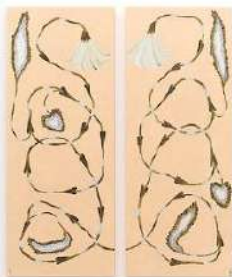
GEORGIA BEAUMONT

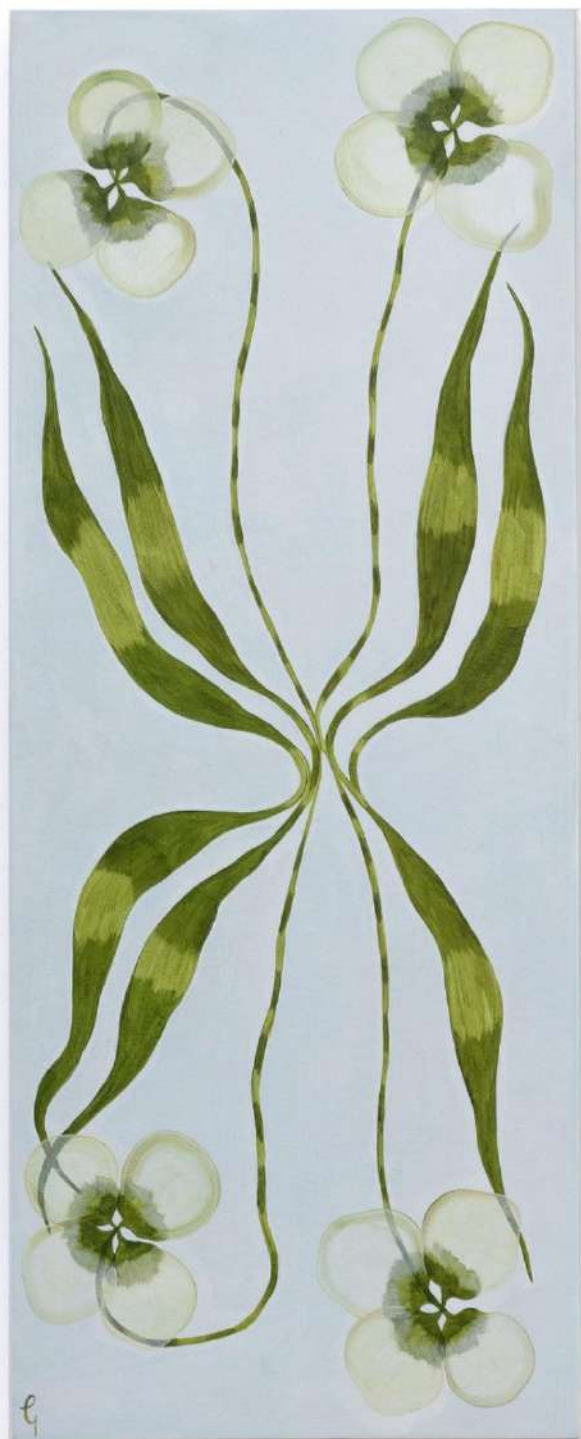
WILDER

We are delighted to present Henry's World, a new body of work by Georgia Beaumont that celebrates the transformative experience of falling in love with a new family member.

Inspired by the birth of her nephew, Beaumont's new series—featuring two large-scale works alongside a collection of small diptychs—reflects on the "soft little surroundings" of infancy. The paintings act as a sanctuary, built to encapsulate the gentle love and care required by something so delicate. Through her signature use of colour and form, Beaumont translates the unspoken sweetness of these early months into an immersive visual world.

"My nephew was born a few months ago, and as I worked on these I was thinking about how amazing it has been falling in love with him. Thinking of his soft little surroundings, cuddles and sweetness. I think of these paintings as a world built for him, encapsulating the kind of gentle love that something so delicate and helpless needs." GB





Georgia Beaumont

Cocoon

2025

50 cm x 40 cm | 19.7 x 15.7

Oil on wood panel

Sold





Georgia Beaumont

Cradle II

2025

50 cm x 40 cm | 19.7 x 15.7

Oil on wood panel







Georgia Beaumont

Cradle I

2025

50 cm x 40 cm | 19.7 x 15.7

Oil on wood panel







Georgia Beaumont

Curl

2025

50 cm x 40 cm | 19.7 x 15.7

Oil on wood panel

Sold





Georgia Beaumont

Cone

2025

50 cm x 40 cm | 19.7 x 15.7

Oil on wood panel









Cursive Quiet

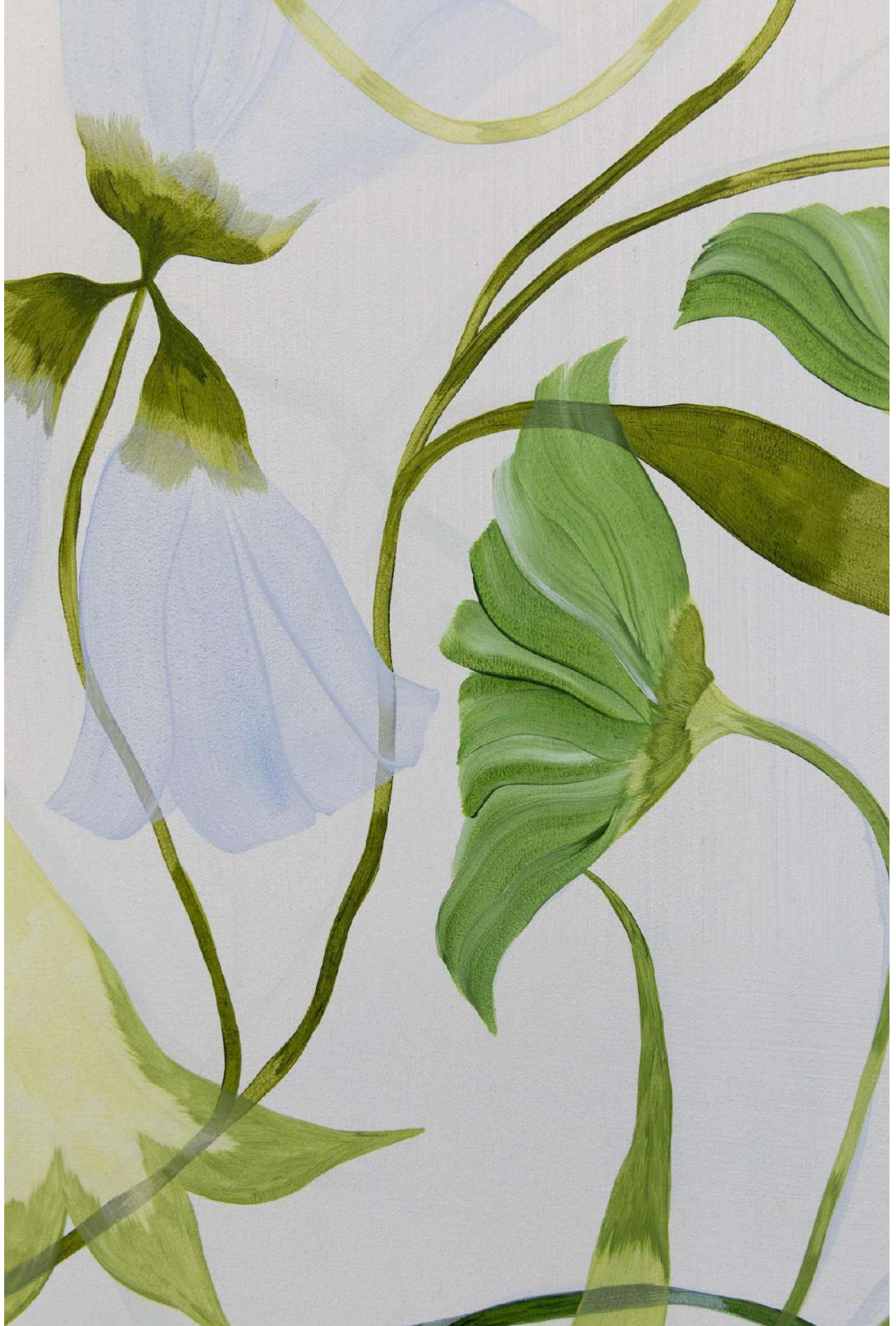
2025

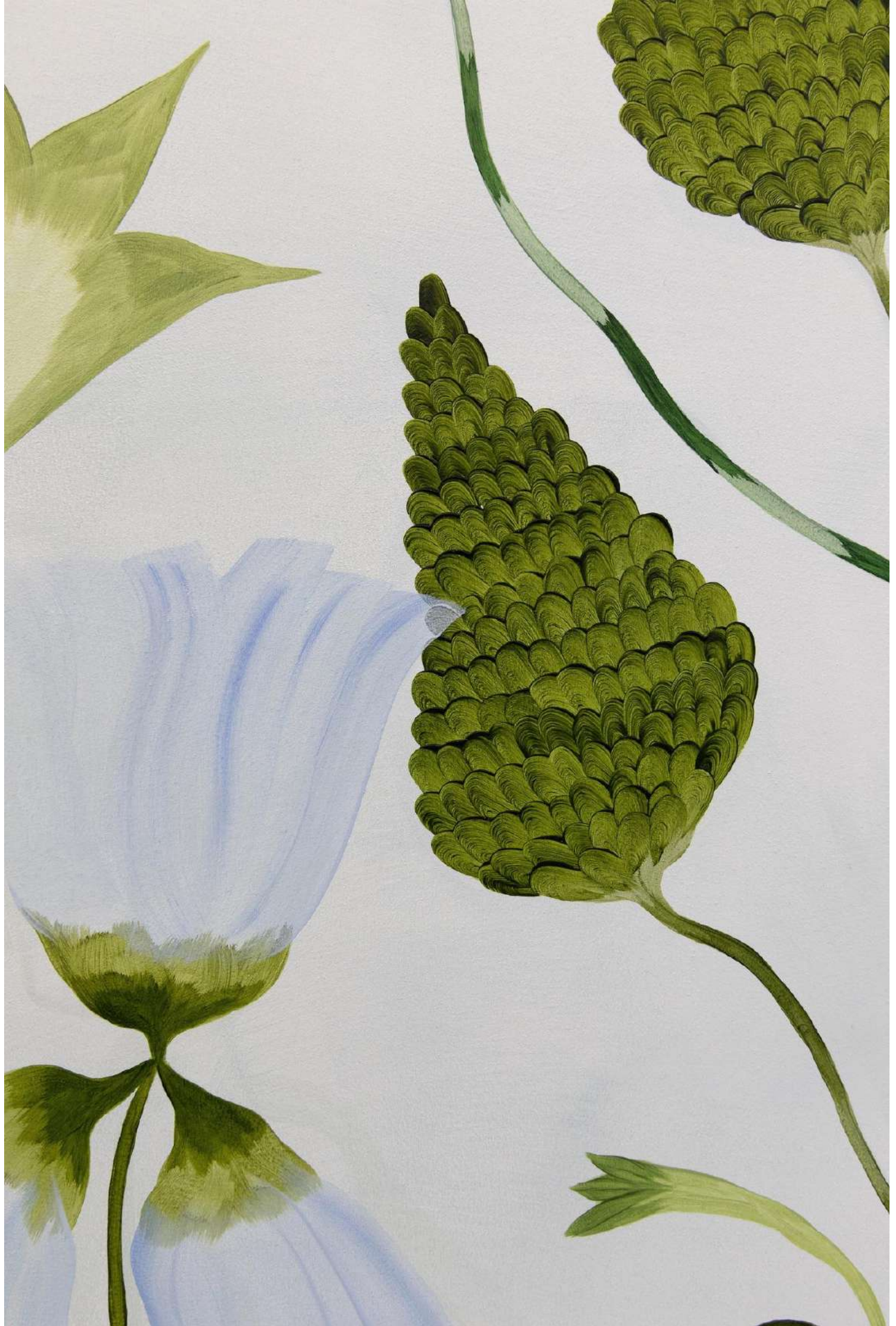
90 x 120 cm each

Oil on wood panel

Sold







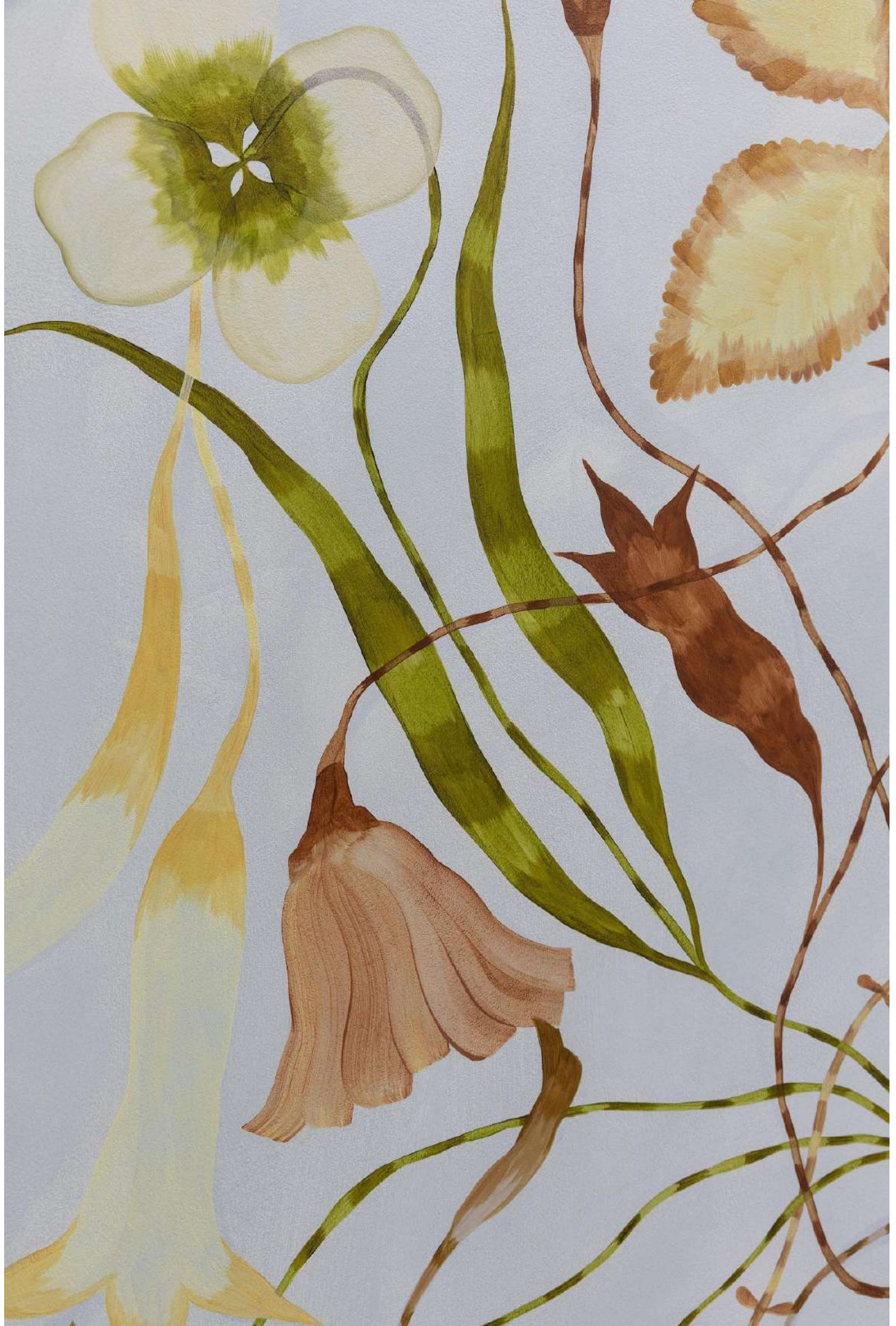


Living In A Lullaby

2025

100 x 120 cm

Oil on wood panel











Studio portrait by Demelza Lightfoot

Georgia Beaumont (b.1996) is a UK-based painter whose practice is rooted in the quiet intricacies of the natural world. Her work explores the poetics of botanical life, its sensuality, fragility, and resilience, through a language of expressive mark-making and organic form. Georgia considers her forms to be a self-generative language, rooted in nature yet imbued with symmetry and sigil-like elements, which meet the more sprawling, intuitive gestures within her compositions. Observing nature, researching its symbolism, and finding solace in both its ephemeral adjustments and its great cyclical change are essential to her practice.

Each work is fused with memory and imagery from the mind's eye, where floral motifs intertwine with gestural brushstrokes, transparent veils, and rigid, opaque stems. Georgia holds these to be physical manifestations of a kinship to the natural world, and ode to its wisdom, as their instinctual, unselfconscious energy echoes nature's output.

Georgia's paintings have been exhibited in London, Barcelona, Milan, Mexico City, and Sydney, and are held in private collections internationally.



Exhibitions:

2025- Petal Tongued, (solo) Thyme in the Cotswold, curated by Wilder
 2025- The Peace Of Wild Things, Curated by Claudia Cheng, Soho Revue, London, UK
 2025- The Sum of Our Parts, (Solo), Wilder Gallery, London, UK
 2024- Monuments, Cohle Gallery, Paris
 2024- Music Of The Wild Earth, Violet Hour, London
 2024- Reverence, Purslane
 2024 - The Spirit's Gaze (solo), Wilder Gallery, London
 2023 - Ode to Autumn, The Violet Hour
 2023 - In My Hand A Forest Lies Asleep, curated by The Violet Hour, Notting Hill, London
 2023 - In Bloom with Victoria Law Projects, Chelsea, London
 2023 - 37A Collective, Seoul, South Korea
 2023 - 8 Holland Street x Collagerie, London
 2022 - The Summer Exhibition at Alex Eagle Studio: 'Bright Young Things', Soho, London
 2022 - Meet Me By The River, Purslane Art, Virtual Show
 2022 - Where's The Frame for Art Aid Ukraine x The Auction Collective, Virtual Show
 2022 - The Art Unit, Koppel X, Picadilly Circus, London
 2022 - Behind the Glue, Casa Lu, Mexico City
 2022 - Venomous, D Contemporary Gallery, Mayfair, London
 2021 - Human Concern, The Artists Contemporary, Virtual Show

2021 - Pop up with Domenica Marland, Compton McRae, Wiltshire
 2021 - Fille Et, Filet Space, Hackney, London
 2021 - Pop up with Domenica Marland, JM Gallery, Portobello Road, London
 2021 - Across The River, New Grass Gallery, Chiswick, London
 2020 - Anti-Freeze, Virtual Show, curated by Cassandra Bowes
 2019 - Sent Folder, Sydney, Australia



Press:

Flourish Zine, Issue 1, 2024
 Architectural Digest, October 2023
The Floristry, September 2023
Out of Season, August 2023
Salon Magazine, Summer 2023
Les Nouveaux Riches, July 2023
Juliet Magazine, June 2023
The World of Interiors, April 2023
The Art Unit, February 2023
 Lick, In Good Taste Magazine, March 2023
Remotely, Lucy Williams Newsletter, November 2022
 Sheerluxe, 'The Cool New Artists To Keep An Eye On', November 2022
 House of Hackney, Dreamers and Schemers, Spring 2022



Wilder Gallery partners with Own Art, enabling art buyers from the UK to acquire work between £100 - £25,000 over a 10 month interest free period. The artwork is delivered immediately and available to enjoy before the first instalment is paid. If you would like to purchase with Own Art or find out more please email Michelle info@wilder.gallery.

International buyers: We understand the importance of flexible payment options. We offer interest-free installments directly with the gallery, and are committed to working with you to create a timeline that suits your purchasing needs. Please contact us to learn more.

Wilder Gallery, 77 College Road, London NW10 5ES
www.wilder.gallery | info@wilder.gallery | +44 (0) 7747 635 823

WILDER