

An abstract painting featuring vibrant red and orange floral or organic shapes, possibly resembling coral or stylized flowers, set against a background of deep blue and purple. Bright, ethereal light rays emanate from the upper right corner, creating a sense of depth and movement. The overall composition is dynamic and textured, with various shades of red, orange, and yellow interspersed within the darker background.

GERTRUDE

MARTHA LAMONT
INTERNAL CURRENTS

WILDER

Internal Currents presents a compelling selection of Martha Lamont's recent paintings, each a vibrant exploration inspired by the intriguing realm of sci-fi botany. In these works, fictional flora take shape through a deliberate "warping of reality," resulting in a curious visual lexicon. Lamont crafts her otherworldly imagery by distorting and fusing depictions of both healing and toxic plants, setting them adrift in fantastical landscapes where the microscopic seemingly expands to fill macroscopic spaces.

A central motif within this body of work is the concept of 'currents,' evident both in the internal logic of her invented worlds and in her artistic process itself. For the initial layers, Lamont saturates the canvas with water, then introduces fluid acrylics and watercolour pigments, allowing chance and unforeseen interactions to play a vital role. Working with swiftness, she employs techniques like brushing, pouring, and spattering to capture emerging forms as they spontaneously reveal themselves. As recognizable references blur, new and unexpected realities begin to coalesce. Through the subsequent application of oils in varying opacities, Lamont meticulously constructs her intricate worlds, engaging in a dynamic "push and pull" between the evolving image and the physical surface of the canvas.

Driven by an impulse to transcend conventional dualities, Lamont conjures worlds that embrace 'glitches,' challenging our ingrained perceptions of space and lived experience. Her invitation for viewers to 'take off their shoes, step into her imaginary world and play' carries an intriguing ambiguity, hinting at an experience that could be simultaneously welcoming and unsettling, safe yet potentially sinister. This very uncertainty, even for the artist herself, underscores the liminal nature of the spaces she creates.

Intriguingly, this collection of paintings finds further resonance through its titles, each one borrowed from a chapter of Jennifer Higbie's insightful book, 'The Other Side: A Journey Into Woman, Art and The Spirit World'. This connection suggests a deeper dialogue between Lamont's visual explorations and Higbie's literary reflections on femininity, artistic expression, and the enigmatic spiritual realm.



Martha Lamont

Oceanic States

2025

Acrylic ink, watercolour powder and oil on canvas

140 x 210

55.12 x 82.68 inches





Martha Lamont

Between Mortals and Beings

2025

Acrylic ink, watercolour powder and oil on canvas

100 x 150 cm

39.37 x 59.06 inches







Martha Lamont

The Vibrations Of Different ould

2025

Acrylic ink, watercolour powder and oil on canvas

70 x 40 cm

27.56 x 15.75 inches







Martha Lamont

A Season In The Life Of A Thought (Quadriptych)

2025

Acrylic ink, watercolour powder and oil on canvas

200 x 65 cm (50 x 65 cm each)

78.74 x 25.59 inches (19.69 x 25.59 inches each)







Martha Lamont

Magnetic Fields (Diptych)

2025

Acrylic ink, watercolour powder and oil on canvas

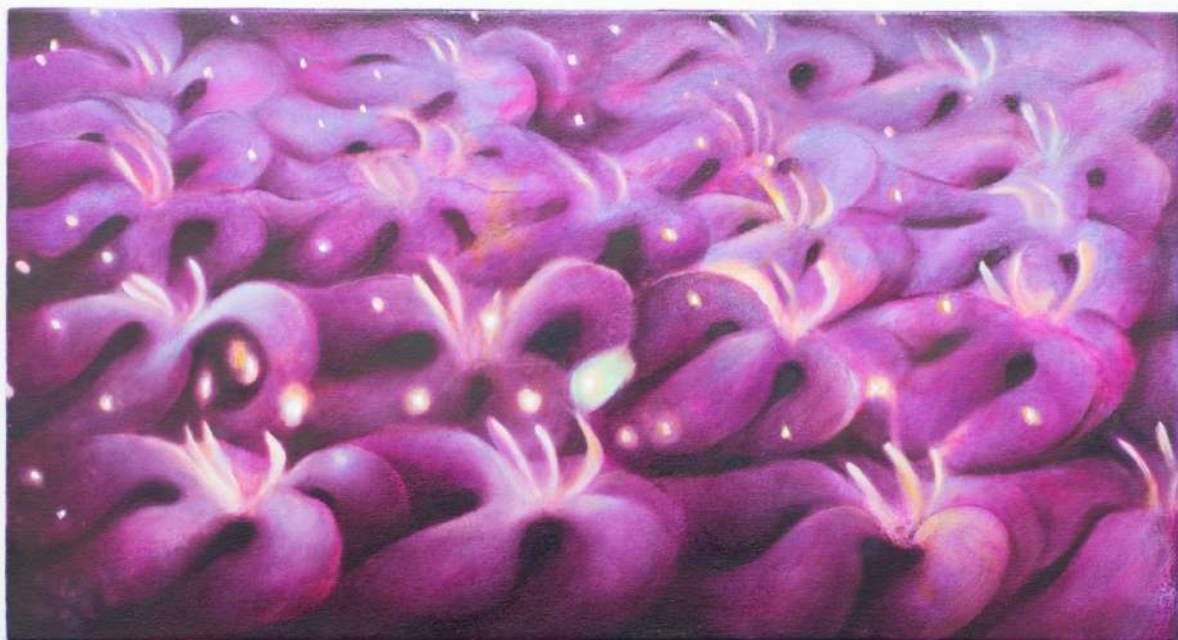
100 x 70 cm (50 x 75cm each)

39.37 x 27.56 inches (19.69 x 29.53 inches each)









Martha Lamont

Witches Dance

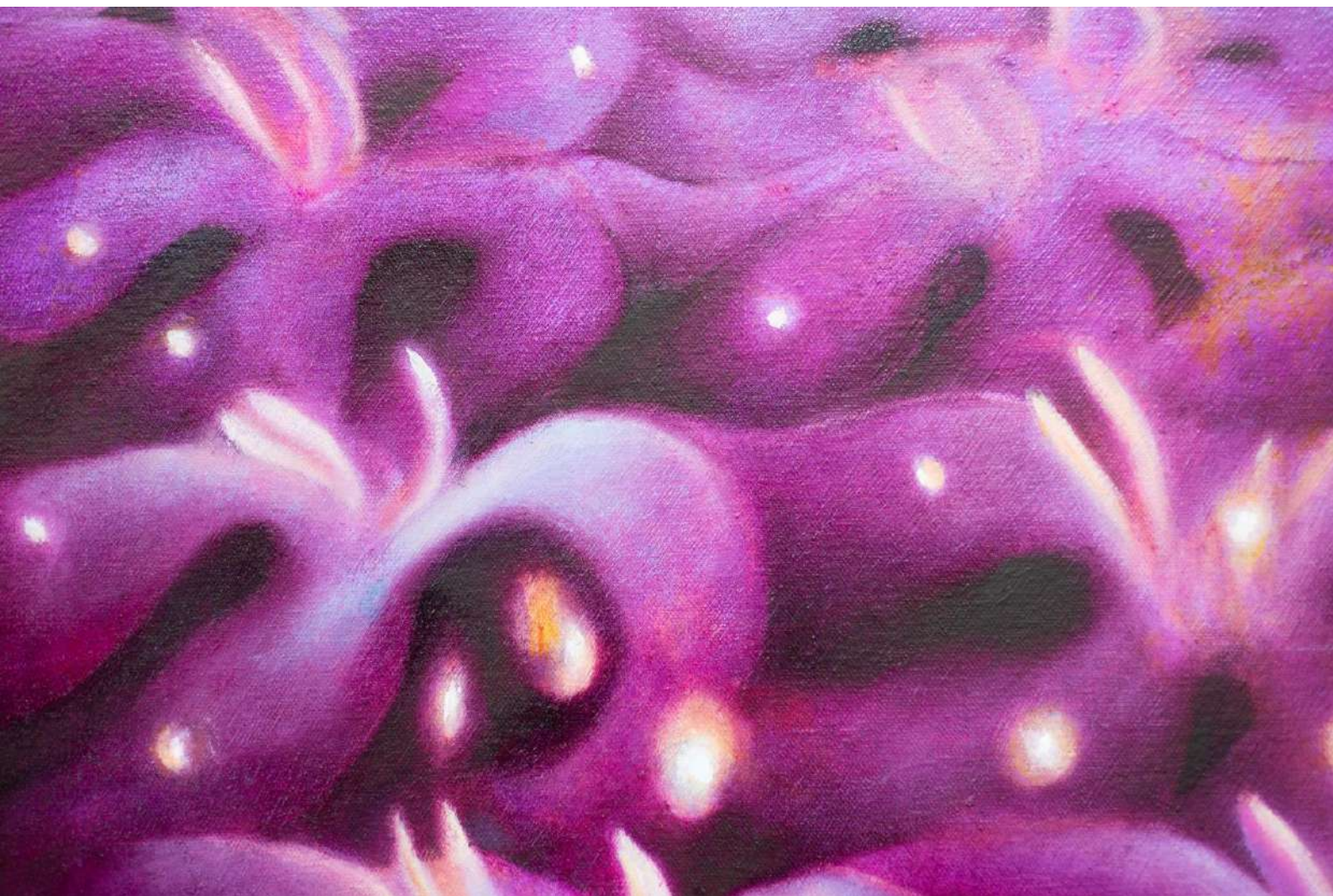
2024

Acrylic ink, watercolour powder and oil on canvas

65 x 35 cm

39.37 x 39.37 inches







Martha Lamont

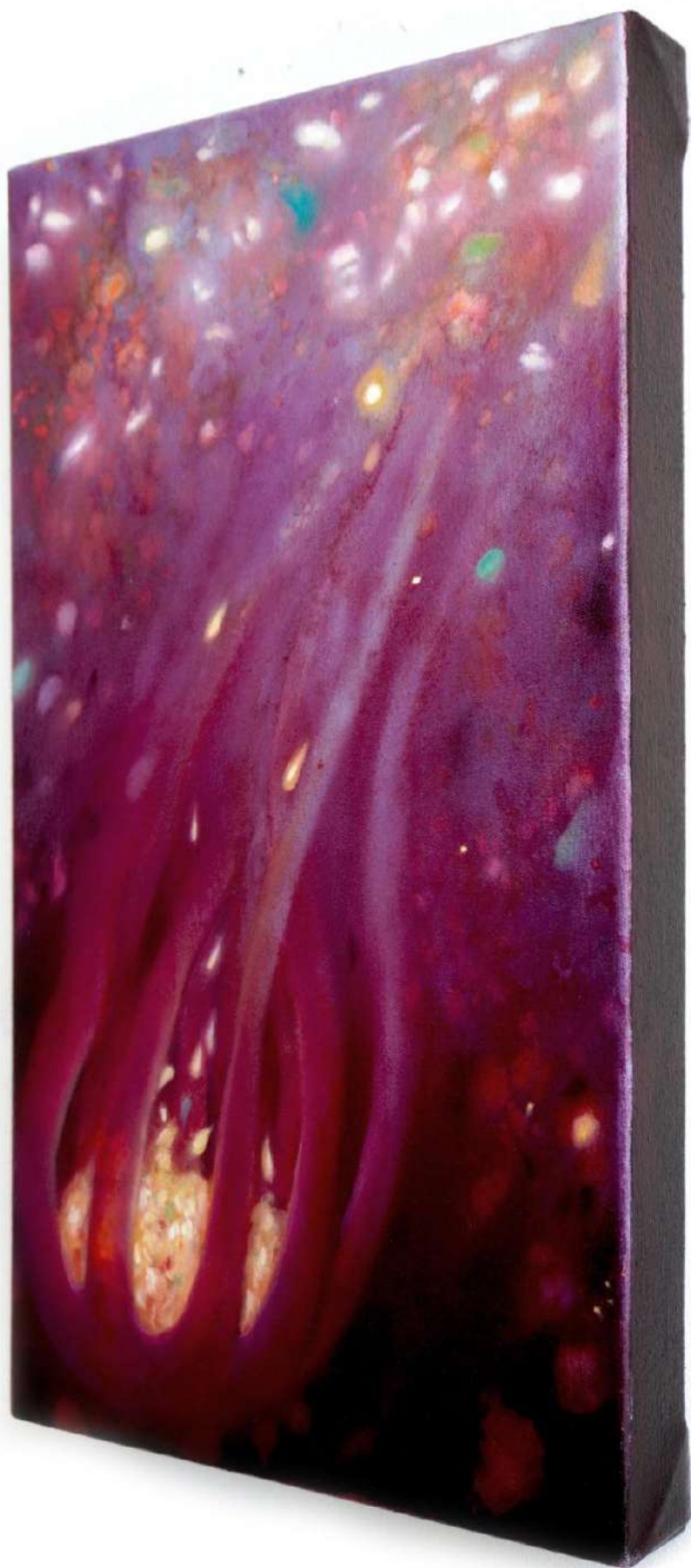
Enter The Fairies

2025

Acrylic ink, watercolour powder and oil on canvas

25 x 45 cm

9.84 x 39.37 inches





Education:

2022- 2023 MA in Fine Art at City and Guilds.

2012-2015- Wimbledon School of Art: BA (Honors) Degree in Technical Arts and Special Effects

2011-2012 Bath City College: Art foundation

Exhibitions:

May 2025: Martha Lamont, Internal Currents (solo), Wilder Gallery, London

May 2025: Blueshop Gallery- Works on Paper 7

November 2024: Woolwich Print Fair with Soho Revue

July 2024: Will The Meadows Bloom Again, Soho Revue, group show

June 2024: ABG Emerging, Alice Black Gallery, group show

March 2024: London Print Fair, Soho Revue

March 2024: Bloom, Outhouse Gallery, group show

November 2023, The Butterfly Effect, D Contemporary, group show.

November 2023: Samhain, Purslane Art, Virtual group fundraiser show

September 2023: Do You Too Have a Sensitive Mind? MA Degree Show

July-August 2023: Come Play With Me, El Castillete, Madrid, duo Exhibition.

March 2023: Interim show, City and Guilds



Wilder Gallery partners with Own Art, enabling art buyers from the UK to acquire work between £100 - £25,000 over a 10 month interest free period. The artwork is delivered immediately and available to enjoy before the first instalment is paid. If you would like to purchase with Own Art or find out more please email Michelle info@wilder.gallery.

International buyers: We understand the importance of flexible payment options. We offer interest-free installments directly with the gallery, and are committed to working with you to create a timeline that suits your purchasing needs. Please contact us to learn more.

Wilder Gallery, 77 College Road, London NW10 5ES
www.wilder.gallery | info@wilder.gallery | +44 (0) 7747 635 823

WILDER



Follow Martha Lamont on Gertrude